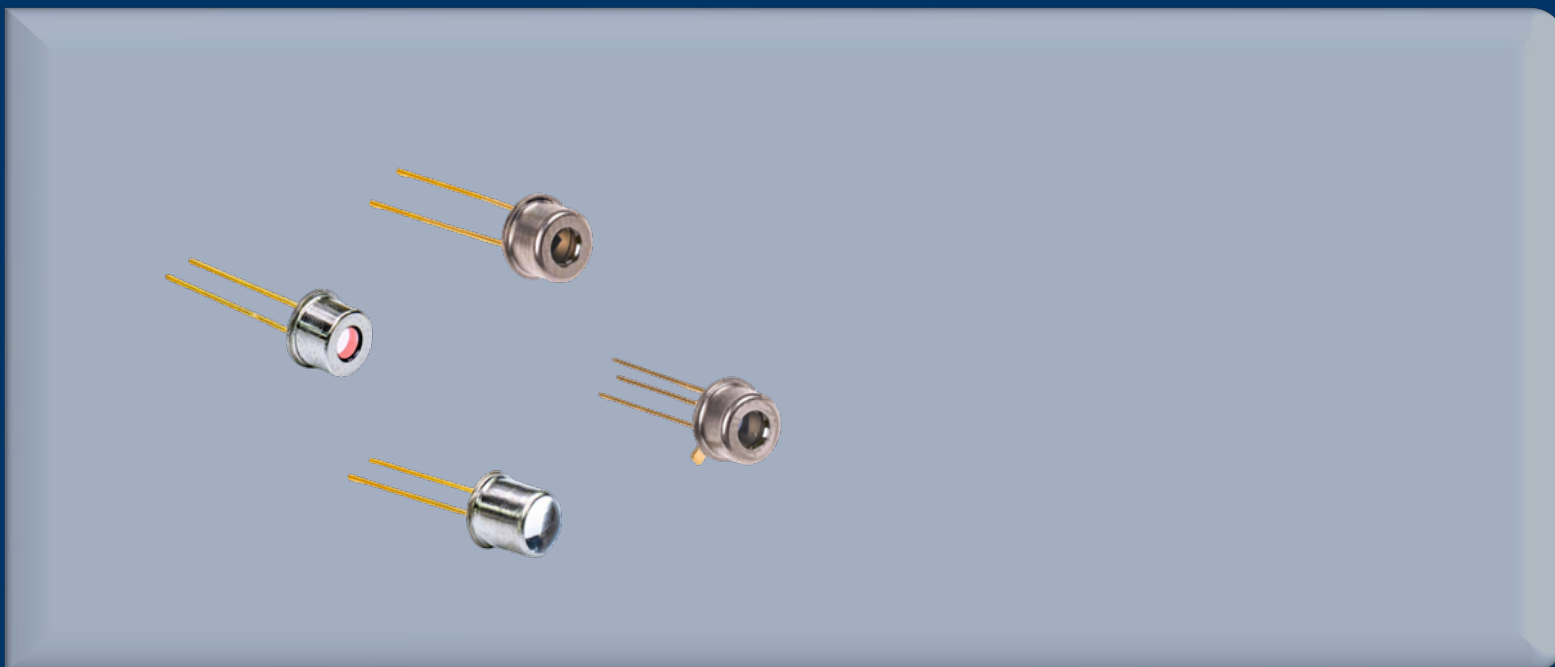


# Photodiodes

## Low Dark Current Silicon PIN Photodiode (TO18 packaging)

Mid-to-high precision optical detection core components

- Excellent optical performance
- Strong structural adaptability
- Good environmental stability



One Platform Many Possibilities

Contact Us [sales@venuslabtech.com](mailto:sales@venuslabtech.com)

Get a Quote



Get Expert Advice  
+658099 5547 ( WhatsApp )



Visit Us  
[www.venuslabtech.com](http://www.venuslabtech.com)

## Overview

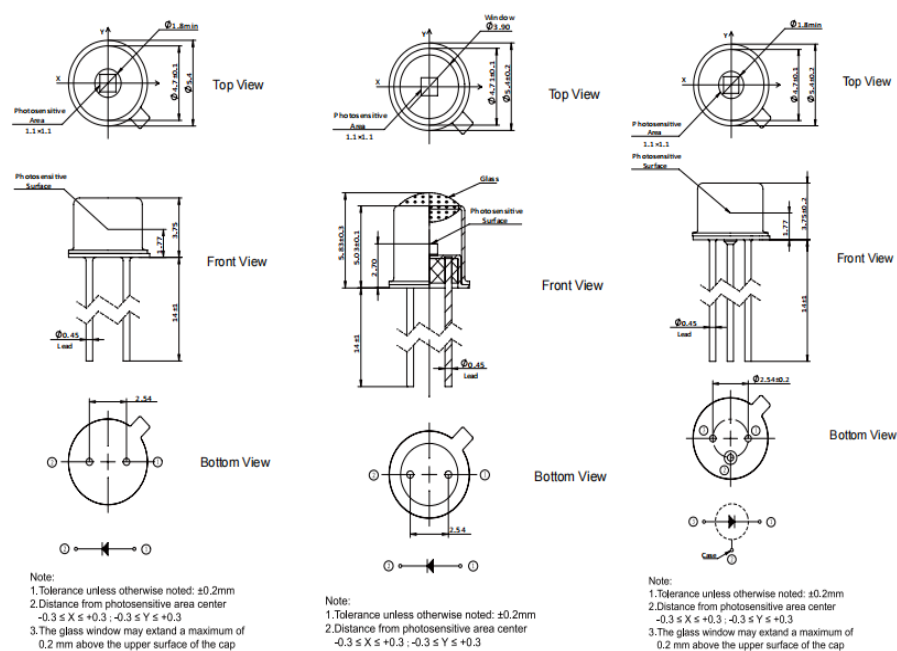
### Introduction:

This product is a silicon PIN photodiode in a TO18 package. Its spectral response range covers 350~1060nm, with special optimization for the response to visible light wavelengths. It features high responsivity and low dark current, and can be adapted to scenarios such as optical power detection and optical analysis equipment. Some parameters (such as photosensitive area size, optical window type, and number of pins) can be customized.

### Features:

- Wide spectrum and excellent response
- Low dark current characteristic
- Flexible packaging and customization
- Strong environmental adaptability

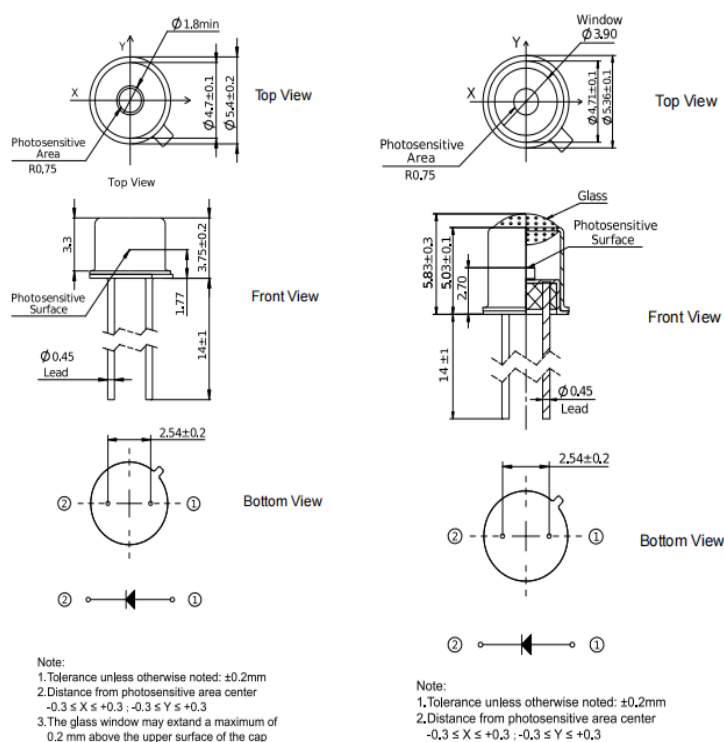
### Dimension:



PDCT01-201

PDCT01-202

PDCT01-205



PDCT02-201

PDCT02-202

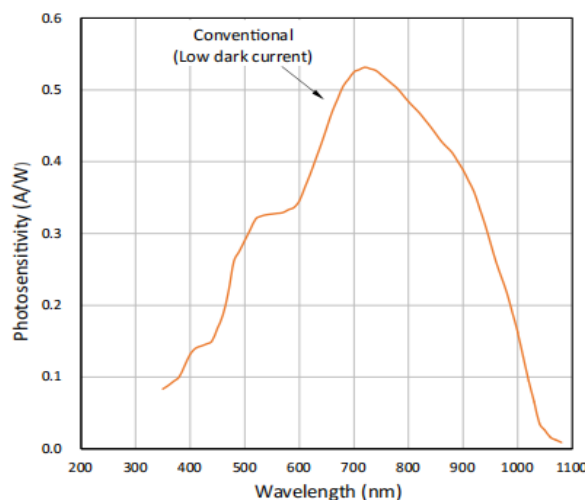
## Specifications

Common Parameter Specification Table

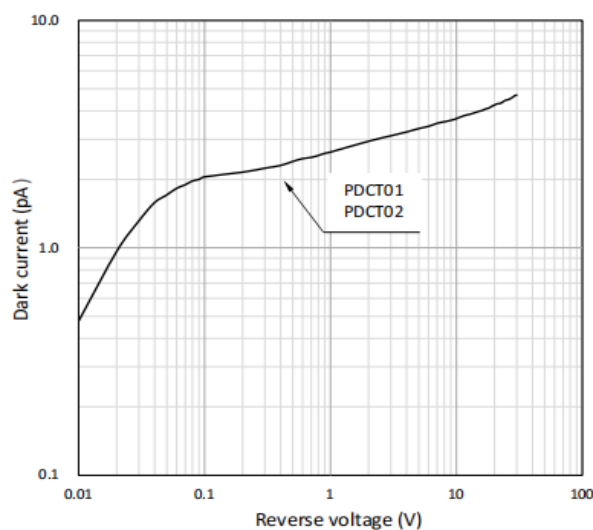
Parameter Item	Parameter Value
Product Type	Silicon PIN Photodiode
Package Type	TO18
Spectral Response Range	350nm ~ 1060nm
Typical Responsivity (@720nm)	0.52A/W
Maximum Dark Current (VR=10mV)	5pA
Storage Temperature Range	-55 ~ +125
Operating Temperature Range (No Condensation)	-40 ~ +100
Soldering Temperature (Duration)	260 (10s)
Maximum Reverse Voltage	30V

## Applications

Spectral Response Curve



Dark Current vs Reverse Voltage



## Service & Support

We are dedicated to delivering exceptional optoelectronic solutions to every client. From precision manufacturing and secure delivery to full-lifecycle technical support, we are here to ensure a seamless and reliable experience at every step.

## 1. Warranty Policy

### Quality First, Worry-Free Operation

**Warranty Period:** We offer a **two-year** warranty service for all of our core optoelectronic products, effective from the date of shipment.

**Coverage:** We provide free repair or replacement services for malfunctions caused by material defects or workmanship errors under normal operating conditions.

**Rapid Response:** Upon receiving a warranty claim, we guarantee to initiate the assessment process within **24 hours** to minimize your equipment downtime.

## 2. Technical Support

### Expert Team, Full-Process Guidance

**Technical Consultation:** Our team of senior optical engineers provides **24/7 online support** to assist with installation, commissioning, optical path alignment, and parameter optimization.

**Scheduled Maintenance:** We offer full-lifecycle maintenance recommendations, including firmware upgrades, optical component cleaning guidelines, and precision calibration services.

**Training Services:** We provide customized remote or on-site operational and safety training to ensure your team can operate the equipment efficiently and safely.

## 3. Logistics & Delivery

### Precision Packaging, Global Reach

**Professional Packaging:** Given the fragile nature of optical instruments, we utilize industrial-grade shockproof, anti-static, and moisture-proof vacuum packaging to ensure zero damage during transit.

**Logistics Partners:** We partner with top-tier global logistics providers (**DHL / FedEx / UPS / SF Express**) to offer reliable shipping with real-time tracking.

**Shipping Insurance:** All shipments are fully insured to eliminate logistics risks.

## 4. Compliance & Certification

### Strict Standards, Total Compliance

**Quality Certification:** Our manufacturing process is **ISO 9001 certified**, and our products comply with international standards such as **CE** and **RoHS**.

**Export Compliance:** "Committed to environmental responsibility, all our products comply with **RoHS 2.0** and **REACH** standards, ensuring safety and global compliance."

## Explore Series

Model	Junction Capacitance (VR=0V, f=100kHz) (pF)	Shunt Resistance (VR=10mV) (G )	Max Dark Current (VR=10mV) (pA)	Photosensitive Area Size (mm)	Rise Time (RL=1k, VR=0V) (μs)	Window Type
PDCT01-201	15 (Typ)	20 (Typ)	5	1.1×1.1	0.05 (Typ)	Optical Glass/Flat
PDCT01-202	15 (Typ)	20 (Typ)	2 (Typ)	1.1×1.1	0.05 (Typ)	Optical Glass/Spherical
PDCT01-205	15 (Typ)	20 (Typ)	30 (Max)	1.1×1.1	0.05 (Typ)	Optical Glass/Flat
PDCT02-201	20 (Typ)	-	20 (Max)	1.5	0.07 (Typ)	Optical Glass/Flat
PDCT02-202	20 (Typ)	-	-	1.5	0.07 (Typ)	Optical Glass/Spherical

 Get in touch with our team to explore configurations, request a quote, or learn more about customized solutions tailored to your needs.

Let us help you move science forward—faster and smarter.

[Get a Quote](#)



Get Expert Advice  
+658099 5547 ( WhatsApp )



Visit Us  
[www.venuslabtech.com](http://www.venuslabtech.com)