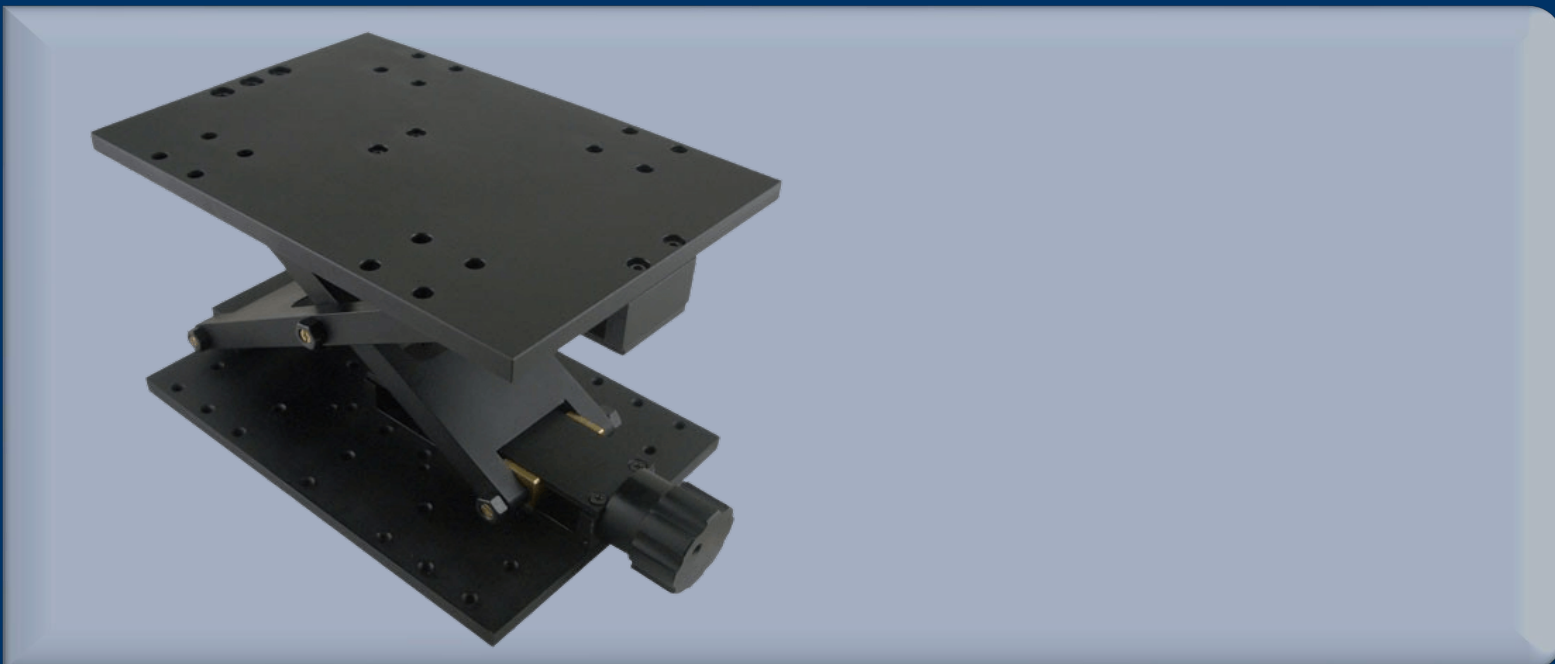


Manual Lifting Platform

VL-Lab Jack Manual

Vertical positioning platform

- Stable Scissor Mechanism: Precision scissor structure, large-stroke lifting, excellent parallelism & anti-sway.
- Load Versatility: Light to 25kg heavy-duty range, plus vacuum-compatible stainless steel version.



One Platform Many Possibilities

Contact Us sales@venuslabtech.com

Get a Quote



Get Expert Advice
+658099 5547 (WhatsApp)



Visit Us
www.venuslabtech.com

Overview

Elevate Your Experiments

The Venus Altus™ Manual series are the basic components for constructing three-dimensional optical paths. Through the precision scissor structure with a high-rigidity aluminum alloy or stainless steel body, it achieves vertical lifting with "small volume and large stroke". Whether it is fine-tuning the center height of the lens or carrying large-scale microscopic equipment, Altus™ can maintain a silky-smooth adjustment feel and self-locking stability under heavy loads.

Applications

- Beam Height Alignment: Adjust the center height of the laser or lens to match the optical axis.
- Sample Positioning: Z-axis focusing of the sample stage in microscopic imaging.
- Equipment Support: Support heavy cameras, prisms, or small vacuum chambers.

Technical Specifications

Table 1: Venus Altus™ Standard Series (Aluminum)

Description: Precision manual lab jacks with scissor mechanism. Ideal for general height adjustment in optical experiments. Features high-rigidity aluminum construction.

VenusLab SKU	Product Name	Platform Size	Travel Range	Load Capacity	Drive Mechanism	Self Weight
VL-LJM-40	Altus™ Standard Lab Jack (40)	40 × 40 mm	13 mm	3 kg	Precision Scissor	0.2 kg
VL-LJM-40-L13	Altus™ Lab Jack (40 Long Travel)	40 × 40 mm	13 mm	3 kg	Precision Scissor	0.2 kg
VL-LJM-50-L13	Altus™ Lab Jack (50 Long Travel)	50 × 50 mm	13 mm	4 kg	Precision Scissor	0.3 kg
VL-LJM-60	Altus™ Standard Lab Jack (60)	60 × 60 mm	13 mm	5 kg	Precision Scissor	0.4 kg
VL-LJM-60-L13	Altus™ Lab Jack (60 Long Travel)	60 × 60 mm	13 mm	5 kg	Precision Scissor	0.4 kg
VL-LJM-80-L25	Altus™ Lab Jack (80 Long Travel)	80 × 80 mm	25 mm	10 kg	Precision Scissor	0.8 kg
VL-LJM-90-L25	Altus™ Lab Jack (90 Long Travel)	90 × 90 mm	25 mm	15 kg	Precision Scissor	1.0 kg

Table 2: Venus Altus™ High-Stability Series

Description: Reinforced heavy-duty lab jacks with high-stability guide mechanisms to minimize sway at maximum height. Designed for heavier instruments.

VenusLab SKU	Product Name	Platform Size	Travel Range	Load Capacity	Drive Mechanism	Self Weight
VL-LJM-60-H	Altus™ High-Stability Jack (60)	60 × 60 mm	13 mm	6 kg	Reinforced Scissor	0.5 kg
VL-LJM-80-H	Altus™ High-Stability Jack (80)	80 × 80 mm	25 mm	15 kg	Reinforced Scissor	1.1 kg
VL-LJM-90-H	Altus™ High-Stability Jack (90)	90 × 90 mm	25 mm	20 kg	Reinforced Scissor	1.2 kg
VL-LJM-90-H-L35	Altus™ High-Stability Jack (Long)	90 × 90 mm	35 mm	20 kg	Reinforced Scissor	1.3 kg
VL-LJM-125-H	Altus™ Heavy Duty Jack (125)	125 × 125 mm	25 mm	25 kg	Dual-Guide Scissor	2.5 kg
VL-LJM-125-H-N	Altus™ Heavy Duty Jack (Var.)	125 × 125 mm	25 mm	25 kg	Dual-Guide Scissor	2.5 kg
VL-LJM-125-H-L45	Altus™ Heavy Duty Jack (Max)	125 × 125 mm	45 mm	25 kg	Dual-Guide Scissor	2.8 kg

Table 3: Venus Sirius™Stainless & Miniature Series

Description: Specialized lab jacks for vacuum environments (Stainless Steel) or compact spaces (Miniature/Compact).

VenusLab SKU	Product Name	Platform Size	Travel Range	Material	Load Capacity	Key Feature
VL-LJS-40	Sirius™Stainless Lab Jack (40)	40 × 40 mm	13 mm	Stainless Steel	3 kg	Vacuum Compatible
VL-LJS-60	Sirius™Stainless Lab Jack (60)	60 × 60 mm	13 mm	Stainless Steel	5 kg	Vacuum Compatible
VL-LJM-Mini-05	Altus™Miniature Jack (5mm)	20 × 20 mm	5 mm	Aluminum/Brass	0.5 kg	Ultra-Compact
VL-LJM-Mini-07	Altus™Miniature Jack (7mm)	25 × 25 mm	7 mm	Aluminum/Brass	1.0 kg	Ultra-Compact
VL-LJM-28-13	Altus™Compact Jack (28)	28 × 28 mm	13 mm	Aluminum	1.0 kg	Compact Design
VL-LJM-28-25	Altus™Compact Jack (Long)	28 × 28 mm	25 mm	Aluminum	1.0 kg	Large Ratio Travel

Table 4: Venus Titan™Industrial Heavy-Duty Series

Description: Industrial-grade vertical translation stages designed for massive loads and extended travel ranges.

VenusLab SKU	Product Name	Platform Size	Travel Range	Load Capacity	Structure	Application
VL-LJM-HD-05	Titan™Industrial Jack (05)	40 × 40 mm	13 mm	5 kg	Industrial Scissor	Automation
VL-LJM-HD-06	Titan™Industrial Jack (06)	60 × 60 mm	25 mm	8 kg	Industrial Scissor	Automation
VL-LJM-HD-08	Titan™Industrial Jack (08)	120 × 80 mm	60 mm	15 kg	Rectangular	Heavy Loading
VL-LJM-HD-09	Titan™Industrial Jack (09)	140 × 100 mm	120 mm	20 kg	Long Travel	Large Range Lift
VL-LJM-HD-10-120	Titan™Industrial Jack (10)	200 × 200 mm	120 mm	30 kg	Heavy Duty	Industrial Lift
VL-LJM-HD-10-200	Titan™Industrial Jack (10L)	200 × 200 mm	200 mm	30 kg	Heavy Duty	Max Travel
VL-LJM-HD-15	Titan™Industrial Jack (15)	240 × 160 mm	100 mm	50 kg	Heavy Duty	Extreme Load
VL-LJM-HD-300	Titan™Custom Jack (300)	Custom Size	50-500 mm	100 kg+	Customized	Special Project

Service & Support

We are dedicated to delivering exceptional optoelectronic solutions to every client. From precision manufacturing and secure delivery to full-lifecycle technical support, we are here to ensure a seamless and reliable experience at every step.

1. Warranty Policy

Quality First, Worry-Free Operation

Warranty Period: We offer a **two-year** warranty service for all of our core optoelectronic products, effective from the date of shipment.

Coverage: We provide free repair or replacement services for malfunctions caused by material defects or workmanship errors under normal operating conditions.

Rapid Response: Upon receiving a warranty claim, we guarantee to initiate the assessment process within **24 hours** to minimize your equipment downtime.

2. Technical Support

Expert Team, Full-Process Guidance

Technical Consultation: Our team of senior optical engineers provides **24/7 online support** to assist with installation, commissioning, optical path alignment, and parameter optimization.

Scheduled Maintenance: We offer full-lifecycle maintenance recommendations, including firmware upgrades, optical component cleaning guidelines, and precision calibration services.

Training Services: We provide customized remote or on-site operational and safety training to ensure your team can operate the equipment efficiently and safely.

3. Logistics & Delivery

Precision Packaging, Global Reach

Professional Packaging: Given the fragile nature of optical instruments, we utilize industrial-grade shockproof, anti-static, and moisture-proof vacuum packaging to ensure zero damage during transit.

Logistics Partners: We partner with top-tier global logistics providers (**DHL / FedEx / UPS / SF Express**) to offer reliable shipping with real-time tracking.

Shipping Insurance: All shipments are fully insured to eliminate logistics risks.

4. Compliance & Certification


Strict Standards, Total Compliance

Quality Certification: Our manufacturing process is **ISO 9001 certified**, and our products comply with international standards such as **CE** and **RoHS**.

Export Compliance: "Committed to environmental responsibility, all our products comply with **RoHS 2.0** and **REACH** standards, ensuring safety and global compliance."

Explore Series

Model	Min. Height	Load Capacity
VL-LJM-60	50 mm	5 kg
VL-LJM-125-H	65 mm	25 kg
VL-LJS-60	50 mm	5 kg

 Get in touch with our team to explore configurations, request a quote, or learn more about customized solutions tailored to your needs.

Let us help you move science forward—faster and smarter.

[Get a Quote](#)



Get Expert Advice
+658099 5547 (WhatsApp)



Visit Us
www.venuslabtech.com