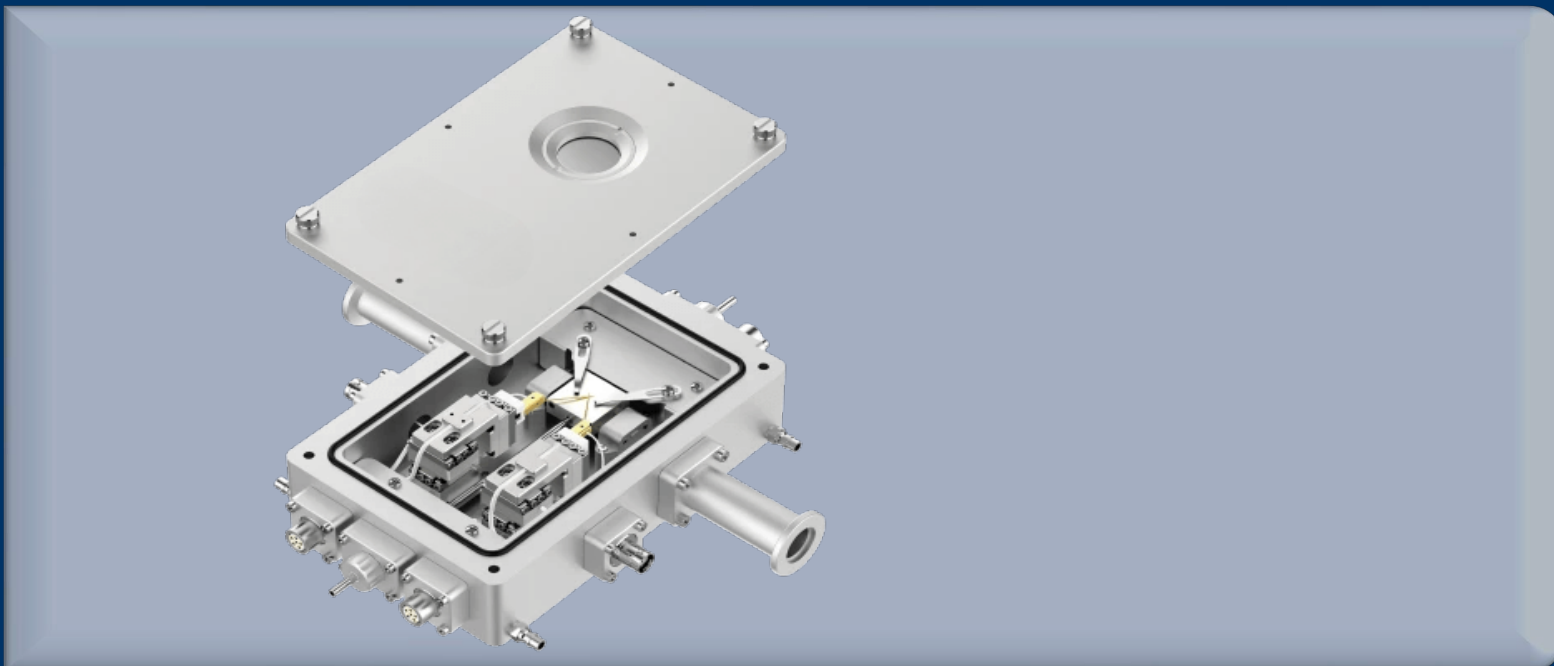


Electrical

MotorProbe Stage

Quick response feature + strong optical compatibility + easy operability

- Precise electronic control adjustment
- Wide temperature range and stable temperature control
- High-quality optical properties
- Diversified functional design



One Platform Many Possibilities

Contact Us sales@venuslabtech.com

Get a Quote



Get Expert Advice
+658099 5547 (WhatsApp)



Visit Us
www.venuslabtech.com

Overview

Product introduction of MotorProbe Stage:

It adopts liquid nitrogen refrigeration combined with resistance heating, with a temperature range covering -190°C to 400°C, suitable for electrical testing in extreme temperature ranges; it has a compact structure, making it easy to place in laboratories; it is equipped with an electric probe station and 4 tungsten steel gold-plated probes, ensuring stable signal transmission through BNC interfaces, and the sample chamber is in a vacuum environment to reduce external interference.

Specifications

Core Parameters

Parameter Category	Parameter Details
Heating and Cooling Method	Liquid nitrogen cooling, resistance heating
Temperature Range	-190 - 400
Temperature Stability	±0.1
Temperature Control Rate	Maximum heating rate: 150 /min, maximum cooling rate: 40 /min
Sample Stage	Material: Silver; Size: 23mm * 23mm
Optical Path	Reflection/transmission (φ2mm light - transmitting hole)
Size of Upper View Window	φ25mm * 1mm
View Window Material	JGS2 quartz glass (transmission band range 220 - 2500nm), can be manually disassembled and replaced
Distance h from the Upper Surface of the View Window to the Upper Surface of the Sample Stage	12.5mm
Height of Sample Chamber	10.5mm
Probe	Electric probe holder; 4 tungsten steel gold - plated probes
Probe Adjustment	XYZ axis stroke: ±6mm
Probe Interface	BNC * 2
Sample Stage Potential	Grounding/electrically floating
Chamber	Vacuum
Overall Dimensions	110mm * 170mm * 45mm

Service & Support

We are dedicated to delivering exceptional optoelectronic solutions to every client. From precision manufacturing and secure delivery to full-lifecycle technical support, we are here to ensure a seamless and reliable experience at every step.

1. Warranty Policy

Quality First, Worry-Free Operation

Warranty Period: We offer a **two-year** warranty service for all of our core optoelectronic products, effective from the date of shipment.

Coverage: We provide free repair or replacement services for malfunctions caused by material defects or workmanship errors under normal operating conditions.

Rapid Response: Upon receiving a warranty claim, we guarantee to initiate the assessment process within **24 hours** to minimize your equipment downtime.

2. Technical Support

Expert Team, Full-Process Guidance

Technical Consultation: Our team of senior optical engineers provides **24/7 online support** to assist with installation, commissioning, optical path alignment, and parameter optimization.

Scheduled Maintenance: We offer full-lifecycle maintenance recommendations, including firmware upgrades, optical component cleaning guidelines, and precision calibration services.

Training Services: We provide customized remote or on-site operational and safety training to ensure your team can operate the equipment efficiently and safely.

3. Logistics & Delivery

Precision Packaging, Global Reach

Professional Packaging: Given the fragile nature of optical instruments, we utilize industrial-grade shockproof, anti-static, and moisture-proof vacuum packaging to ensure zero damage during transit.

Logistics Partners: We partner with top-tier global logistics providers (**DHL / FedEx / UPS / SF Express**) to offer reliable shipping with real-time tracking.

Shipping Insurance: All shipments are fully insured to eliminate logistics risks.

4. Compliance & Certification


Strict Standards, Total Compliance

Quality Certification: Our manufacturing process is **ISO 9001 certified**, and our products comply with international standards such as **CE** and **RoHS**.

Export Compliance: "Committed to environmental responsibility, all our products comply with **RoHS 2.0** and **REACH** standards, ensuring safety and global compliance."

Explore Series

Model	Probe Displacement Precision	Temperature Stability	Probe Adjustment Stroke (XYZ axis)	Temperature Range
ZKL400F-D	5µm	±0.1°C	±6mm	-190°C - 400°C

 Get in touch with our team to explore configurations, request a quote, or learn more about customized solutions tailored to your needs.

Let us help you move science forward—faster and smarter.

[Get a Quote](#)



Get Expert Advice
+658099 5547 (WhatsApp)



Visit Us
www.venuslabtech.com