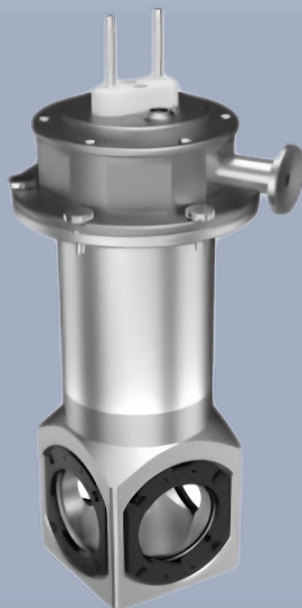


## Optical

### Multi-window heating and cooling stage for Spectrometer

Multi-window optical design and wide-temperature-range precision temperature control

- Multi-window Optical Adaptation System
- Wide Temperature Range Precision Temperature Control Technology
- High-efficiency Experimental Process Design
- Harsh Environment Adaptability



One Platform Many Possibilities

Contact Us [sales@venuslabtech.com](mailto:sales@venuslabtech.com)

Get a Quote



Get Expert Advice  
+658099 5547 ( WhatsApp )



Visit Us  
[www.venuslabtech.com](http://www.venuslabtech.com)

## Overview

### Introduction:

The Multi-window Heating and Cooling Stage for Spectrometer is a high-precision temperature-controlled testing platform specially designed for spectroscopic analysis. Its core function is to provide an integrated solution for samples that combines wide-temperature-range environmental control and multi-dimensional optical observation channels. This equipment adopts a modular multi-window design, with replaceable optical windows (such as quartz glass or infrared-compatible windows) installed at the top and bottom. It supports multiple spectroscopic testing modes including transmission and reflection, and is compatible with the optical path requirements of mainstream spectrometers such as Raman, fluorescence, and infrared spectrometers.

### Features:

- Pipelines and connecting wires are all located on the chamber surface, making it suitable for closed optical path experiments.
- The angle between the sample area and the window can be adjusted every 15 degrees, which is convenient for optical path adjustment.
- It is compatible with most spectrometer brands on the market, featuring high compatibility.
- Electrical connectors, magnetic stirring systems, etc., can be added to meet more complex experimental needs

## Specifications

### Common Parameter Specification Table

Refrigeration model	Liquid nitrogen refrigeration
Temperature resolution	0.1
Temperature accuracy	±0.01
Maximum heating rate	50 /min
Maximum cooling rate	-30 /min
Testable sample area	30mm*35mm
Diameter of the front observation window	41mm
Vacuum level	1Pa

## Service & Support

We are dedicated to delivering exceptional optoelectronic solutions to every client. From precision manufacturing and secure delivery to full-lifecycle technical support, we are here to ensure a seamless and reliable experience at every step.

### 1. Warranty Policy

#### Quality First, Worry-Free Operation

**Warranty Period:** We offer a **two-year** warranty service for all of our core optoelectronic products, effective from the date of shipment.

**Coverage:** We provide free repair or replacement services for malfunctions caused by material defects or workmanship errors under normal operating conditions.

**Rapid Response:** Upon receiving a warranty claim, we guarantee to initiate the assessment process within **24 hours** to minimize your equipment downtime.

### 2. Technical Support

#### Expert Team, Full-Process Guidance

**Technical Consultation:** Our team of senior optical engineers provides **24/7 online support** to assist with installation, commissioning, optical path alignment, and parameter optimization.

**Scheduled Maintenance:** We offer full-lifecycle maintenance recommendations, including firmware upgrades, optical component cleaning guidelines, and precision calibration services.

**Training Services:** We provide customized remote or on-site operational and safety training to ensure your team can operate the equipment efficiently and safely.

### 3. Logistics & Delivery

#### Precision Packaging, Global Reach

**Professional Packaging:** Given the fragile nature of optical instruments, we utilize industrial-grade shockproof, anti-static, and moisture-proof vacuum packaging to ensure zero damage during transit.

**Logistics Partners:** We partner with top-tier global logistics providers (**DHL / FedEx / UPS / SF Express**) to offer reliable shipping with real-time tracking.

**Shipping Insurance:** All shipments are fully insured to eliminate logistics risks.

### 4. Compliance & Certification


#### Strict Standards, Total Compliance

**Quality Certification:** Our manufacturing process is **ISO 9001 certified**, and our products comply with international standards such as **CE** and **RoHS**.

**Export Compliance:** "Committed to environmental responsibility, all our products comply with **RoHS 2.0** and **REACH** standards, ensuring safety and global compliance."

## Explore Series

Model	Number of window	Net weight	Overall dimensions	Range of Temperature
VLTS600V-SM	4	2.5kg	110mmx250mm	-190°C~600°C

 Get in touch with our team to explore configurations, request a quote, or learn more about customized solutions tailored to your needs.

Let us help you move science forward—faster and smarter.

[Get a Quote](#)



Get Expert Advice  
+658099 5547 ( WhatsApp )



Visit Us  
[www.venuslabtech.com](http://www.venuslabtech.com)