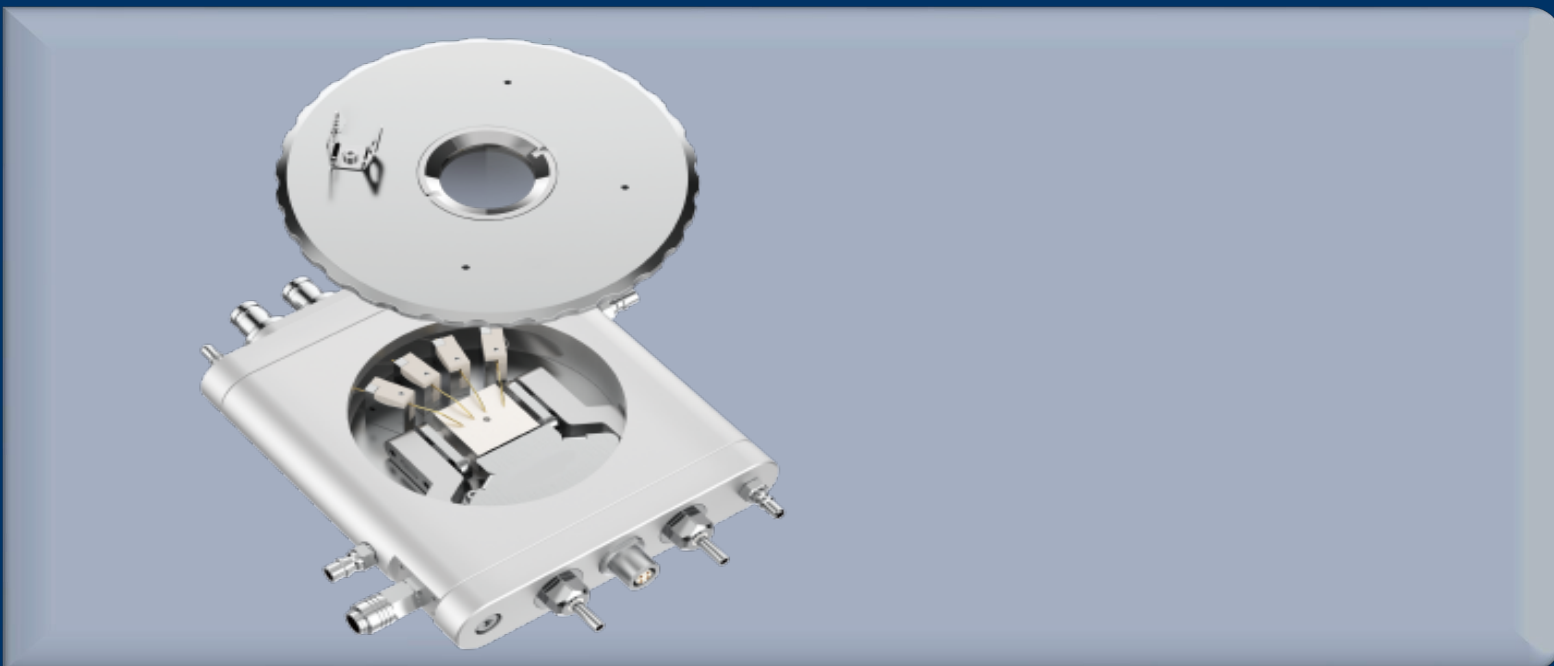


Electrical

GG Series Probe Thermo Stage

Wide temperature range, precise control, integrated probe measurement

- Accurate temperature control (± 0.1 , multi-mode)
- Strong adaptability (compatible with optional instrument optical paths)
- Standard probes (4 sets of BNC interfaces)
- Customization support (chamber, probes, software)
- Unified temperature control (high heating and cooling rates)



One Platform Many Possibilities

Contact Us sales@venuslabtech.com

Get a Quote



Get Expert Advice
+658099 5547 (WhatsApp)



Visit Us
www.venuslabtech.com



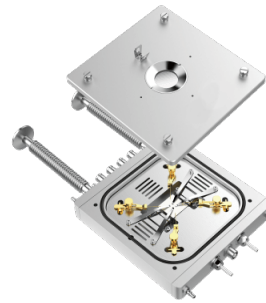
VLE-190-600S



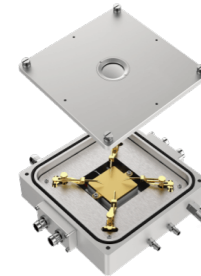
VLE-190-400SV



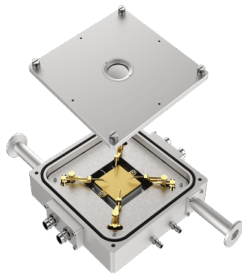
VLE-190-600



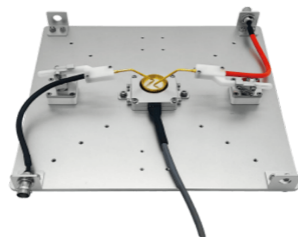
VLE-190-400V



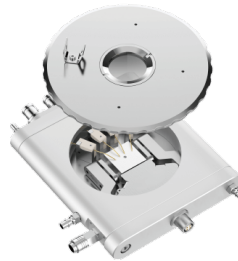
VLE-25-120



VLE-25-120V



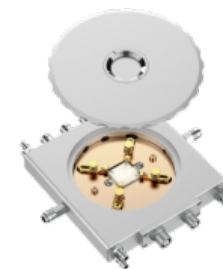
VLE-RT-200Mini



VLE-RT-600S/
VLE-RT-800S



VLE-RT-1000/
VLE-RT-1200



VLE-RT-1000HE

Overview

Introduction to GG Series ProbeThermo Stage :

Each model of the probe-based thermal stage is specifically designed for variable temperature electrical testing of samples. It integrates an electrical module and precise temperature control, enabling accurate contact with samples via probes and transmission of electrical signals to external instruments. Each model features a wide temperature control range: low temperatures are achieved through liquid nitrogen or TEC cooling, while high temperatures are realized using resistance heating. The temperature control is stable (± 0.1) and supports multiple modes. It is compatible with optical/electrical instruments, comes standard with 4 sets of probes and BNC interfaces, and supports customized expansion to meet research needs in various fields.

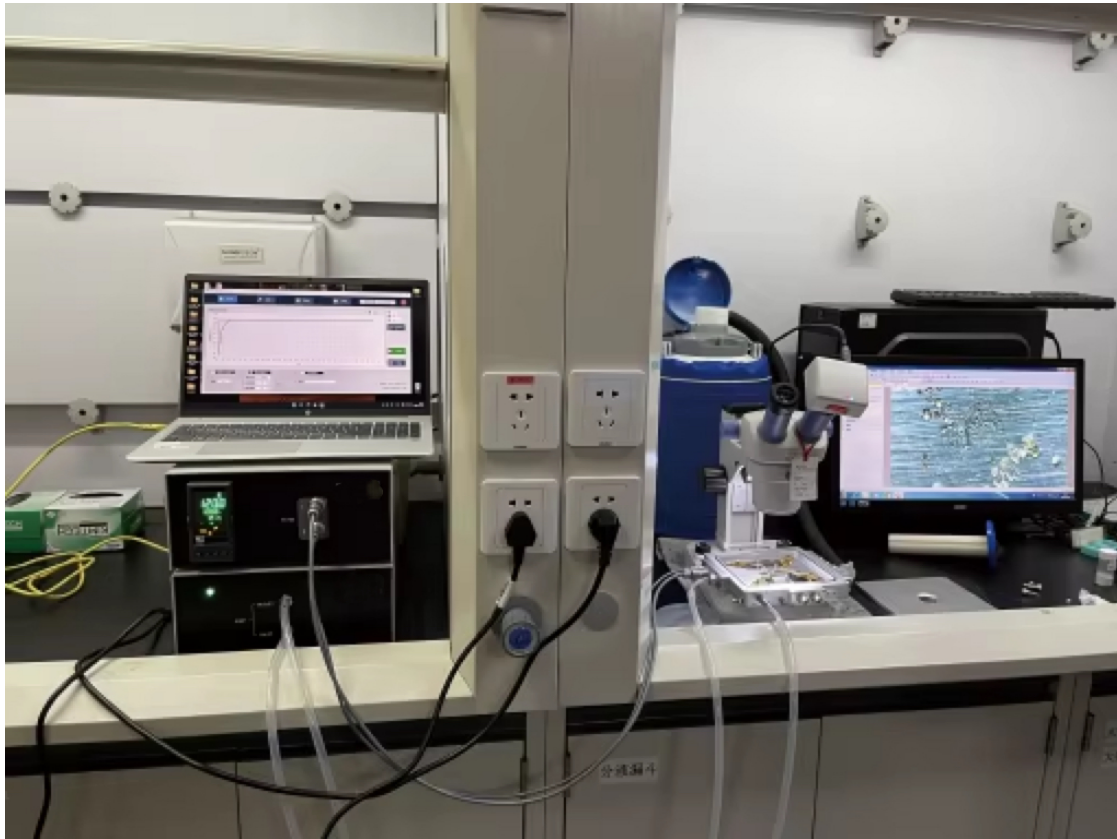
Specifications

The same parameters for each model of GG Series ProbeThermo Stage :

Temperature Stability	All reach ± 0.1
Temperature Control Modes	Support multiple modes such as fixed-point, slope, and program segment temperature control
High-Temperature Control Method	All adopt resistance heating
Window Material	Uniformly use JGS2 quartz glass (transmission band: 220nm~2500nm), which can be manually disassembled and replaced
Number of Probes	Standard configuration of 4 sets of probes
Probe Interface	Mainly BNC interface (some models include triaxial BNC interface)
Sample Stage Potential	Support switching between grounding/electric floating
Sample Stage Optical Path	Most support optional reflection/transmission optical paths
Adaptive Instruments	Can be used with optical instruments (e.g., microscopes) and electrical instruments (e.g., source meters, multimeters)
Customization Support	All support customization of atmosphere/vacuum chambers, special probes, customized temperature control software, etc.

Application

Custom probe thermal stage, used in pharmaceutical research



Service & Support

We are dedicated to delivering exceptional optoelectronic solutions to every client. From precision manufacturing and secure delivery to full-lifecycle technical support, we are here to ensure a seamless and reliable experience at every step.

1. Warranty Policy

Quality First, Worry-Free Operation

Warranty Period: We offer a **two-year** warranty service for all of our core optoelectronic products, effective from the date of shipment.

Coverage: We provide free repair or replacement services for malfunctions caused by material defects or workmanship errors under normal operating conditions.

Rapid Response: Upon receiving a warranty claim, we guarantee to initiate the assessment process within **24 hours** to minimize your equipment downtime.

2. Technical Support

Expert Team, Full-Process Guidance

Technical Consultation: Our team of senior optical engineers provides **24/7 online support** to assist with installation, commissioning, optical path alignment, and parameter optimization.

Scheduled Maintenance: We offer full-lifecycle maintenance recommendations, including firmware upgrades, optical component cleaning guidelines, and precision calibration services.

Training Services: We provide customized remote or on-site operational and safety training to ensure your team can operate the equipment efficiently and safely.

3. Logistics & Delivery

Precision Packaging, Global Reach

Professional Packaging: Given the fragile nature of optical instruments, we utilize industrial-grade shockproof, anti-static, and moisture-proof vacuum packaging to ensure zero damage during transit.

Logistics Partners: We partner with top-tier global logistics providers (**DHL / FedEx / UPS / SF Express**) to offer reliable shipping with real-time tracking.

Shipping Insurance: All shipments are fully insured to eliminate logistics risks.

4. Compliance & Certification


Strict Standards, Total Compliance

Quality Certification: Our manufacturing process is **ISO 9001 certified**, and our products comply with international standards such as **CE** and **RoHS**.

Export Compliance: "Committed to environmental responsibility, all our products comply with **RoHS 2.0** and **REACH** standards, ensuring safety and global compliance."

Explore Series

Model/overall Dimensions	Overall Dimensions	Sample Stage	Net Weight	Temperature Range
VLE-190-600S	91mm×97mm×24mm	Silver; 23mm×23mm	0.5kg	-190°C~600°C
VLE-190-400SV	91mm×97mm×24mm (Excluding bellows)	Silver; 23mm×23mm	0.6kg	-190°C~400°C
VLE-190-600	160mm×150mm×30mm	Silver; 23mm*23mm	1.5kg	-190°C~600°C
VLE-190-400V	160mm×150mm×30mm (Excluding bellows)	Silver; 23mm×23mm	1.6kg	-190°C~400°C
VLE-25-120	91mm×97mm×24mm	Copper; 40mm*40mm	0.5kg	-25°C~120°C
VLE-25-120V	91mm97mm24mm (excluding the bellows)	Copper; 40mm*40mm	0.6kg	-25°C~120°C
VLE-RT-200Mini	220mm220mm20mm	Copper; φ20mm*4mm	0.5kg	RT~200°C
VLE-RT-600S	91mm97mm24mm	Silver; 23mm * 23mm	0.6kg	RT~600°C
VLE-RT-800S	91mm97mm24mm	Stainless steel; 23mm*23mm	0.6kg	RT~800°C
VLE-RT-1000	150mm210mm27mm	Ceramic; 20mm*20mm	1.6kg	RT~1000°C
VLE-RT-1200	150mm210mm27mm	Ceramic; 20mm*20mm	1.6kg	RT~1200°C
VLE-RT-1000HE	120mm120mm25mm	Ceramic; 20mm*20mm	0.6kg	RT~1000°C

 Get in touch with our team to explore configurations, request a quote, or learn more about customized solutions tailored to your needs.

Let us help you move science forward—faster and smarter.

[Get a Quote](#)



Get Expert Advice
+658099 5547 (WhatsApp)



Visit Us
www.venuslabtech.com