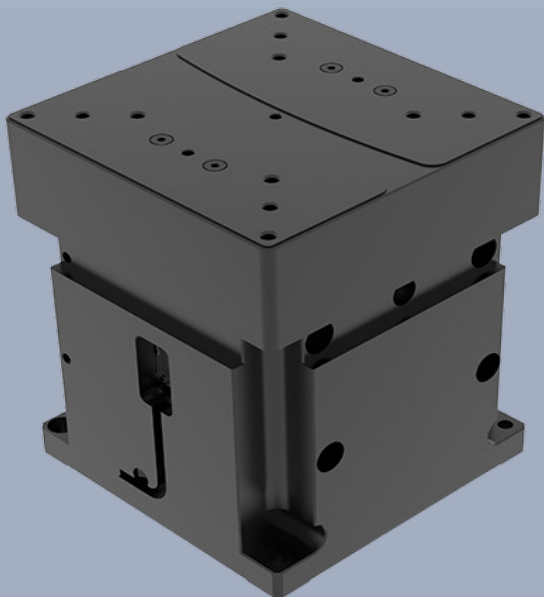


Piezo Stages

VenusLab Piezo Motor Stages

Compact Nanometer Motion Control Solutions

- Integrated optical encoders for stable nanoscale positioning.
- 100mm/s response + high load capacity in an ultra-compact form factor.



One Platform Many Possibilities

Contact Us sales@venuslabtech.com

Get a Quote



Get Expert Advice
+658099 5547 (WhatsApp)



Visit Us
www.venuslabtech.com

Overview

Precision Beyond Size

VenusLab Piezo Motor Stages utilize advanced ultrasonic piezo drive technology to deliver smooth, high-speed motion with zero backlash. Engineered for space-constrained applications, these stages provide a robust solution for researchers and engineers requiring heavy-duty performance and sub-micron precision without compromising on workspace.

Applications

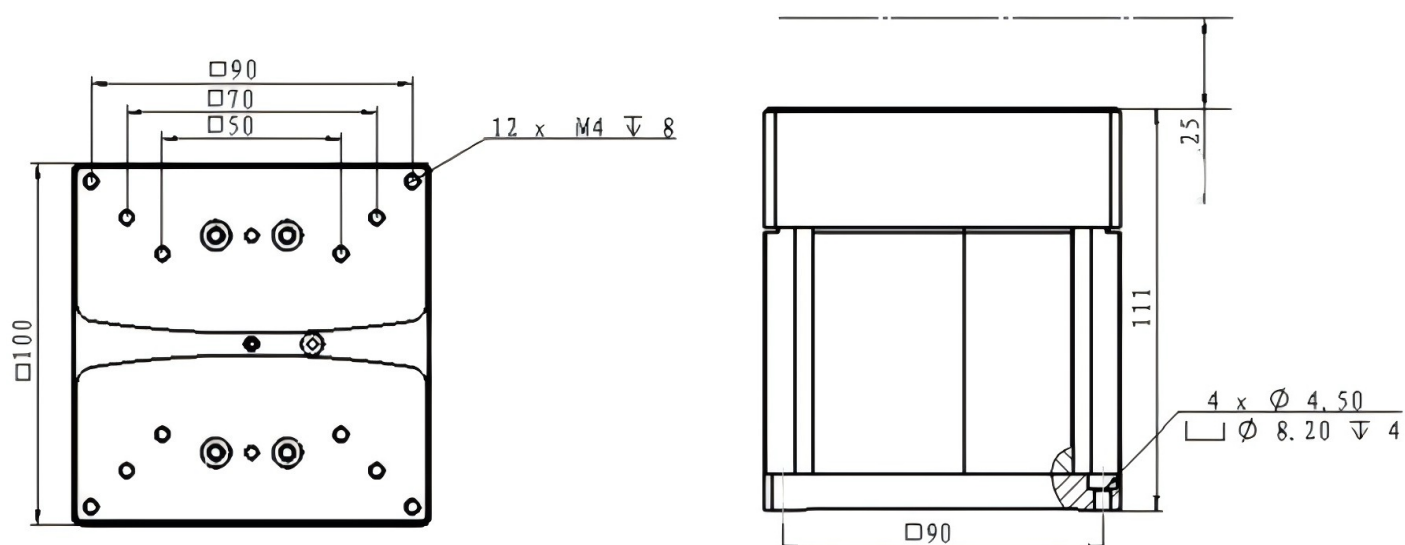
- Precision Optical Alignment
- Semiconductor Inspection
- Bio-Micromanipulation
- Laser Focus Control

Technical Specifications

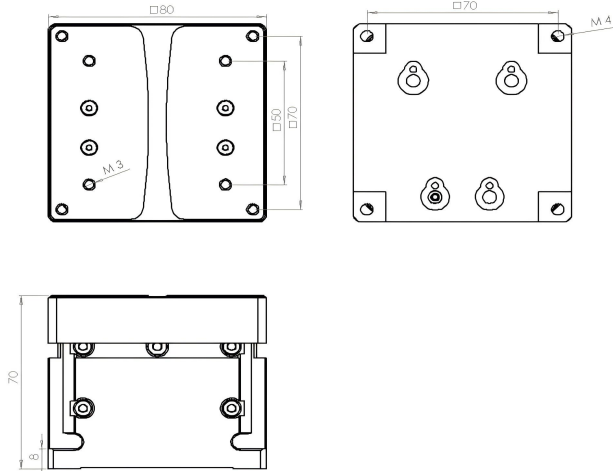
Model (VenusLab)	Travel Range (mm)	Drive Mechanism	Max Load (kg)	Max Speed (mm/s)	Min Step (nm)	Repeatability (nm)	Position Sensor	Material	Weight (kg)
VL-VS-1025TG	25	Piezo Motor	5	1	50	+/-200	Optical Grating	Aluminum Alloy	2.55
VL-VS-0812	5-12	Piezo Motor	0.5-1.5	50	50	+/-200	Optical Grating	Aluminum Alloy	1.0
VL-VS-0606	1-6	Piezo Motor	0.5	100	50	+/-200	Optical Grating	Aluminum Alloy	0.5
VL-VS3-0825C	12-25	Piezo Motor	1-2	50	50	+/-200	Optical Grating	Aluminum Alloy	1.75
VL-LS3-1020Z	10-40	Piezo Motor	1-4	100	50	+/-200	Optical Grating	Aluminum Alloy	1.3
VL-LS2-0910Z	10-20	Piezo Motor	1-2	100	50	+/-200	Optical Grating	Aluminum Alloy	0.52
VL-LS2-0610Z	10-20	Piezo Motor	1-2	100	50	+/-200	Optical Grating	Aluminum Alloy	0.35
VL-LS2-0606Z	2-6	Piezo Motor	0.3-0.5	100	50	+/-200	Optical Grating	Aluminum Alloy	0.25

Mechanical Dimensions

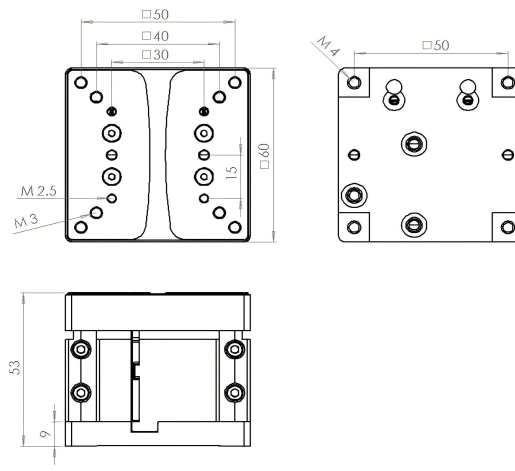
VL-PT100-25HD



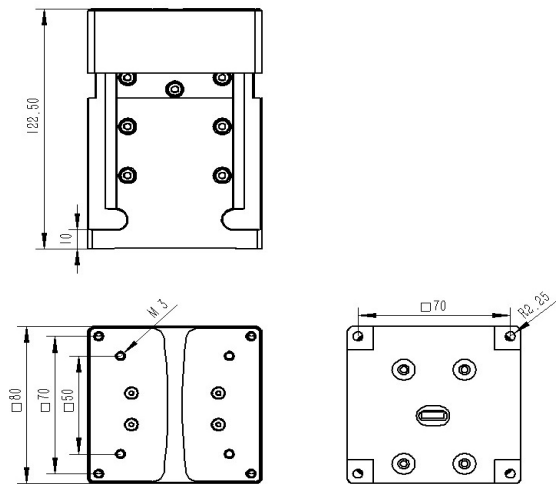
VL-PT080-12



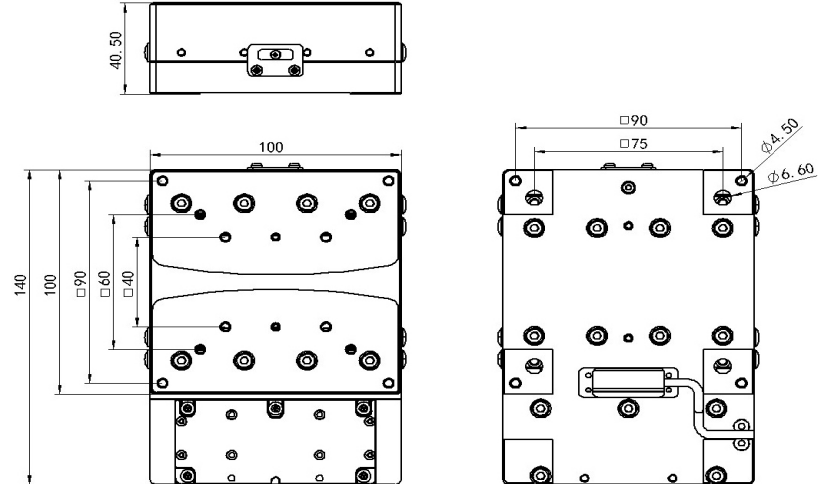
VL-PT060-06



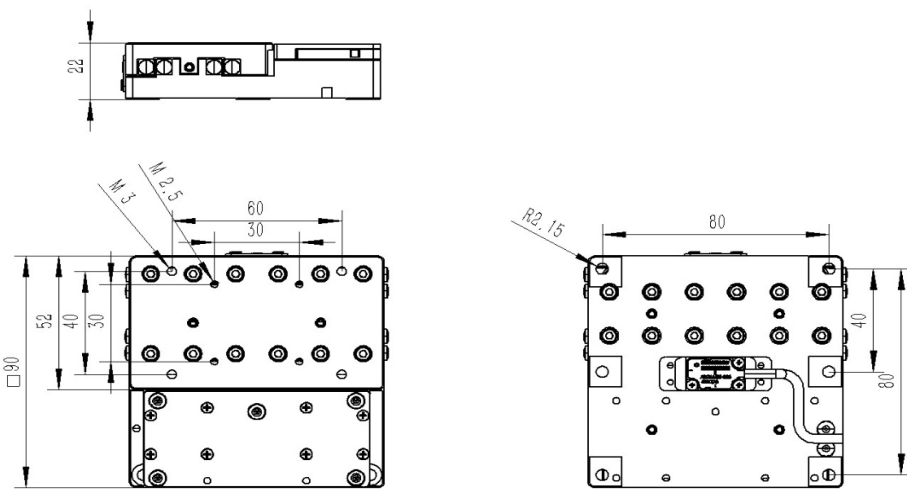
VL-PT080-25S



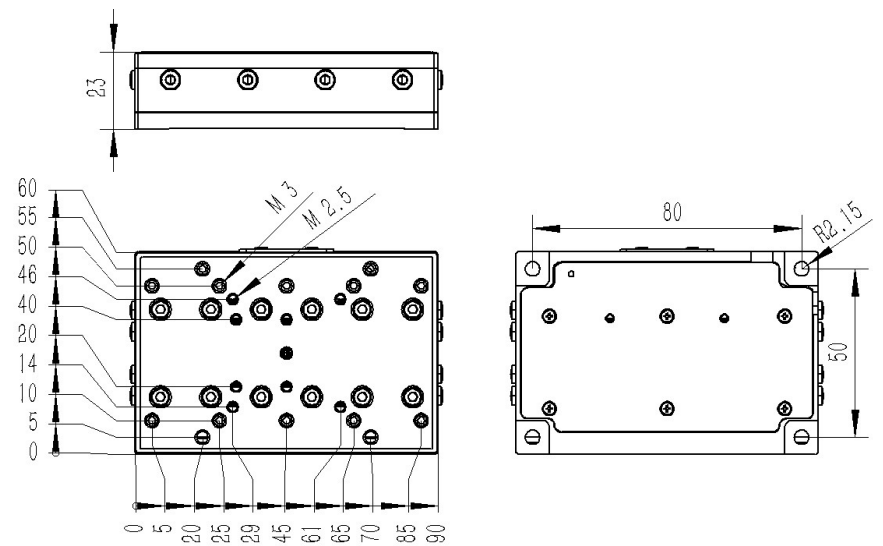
VL-PZ100-20



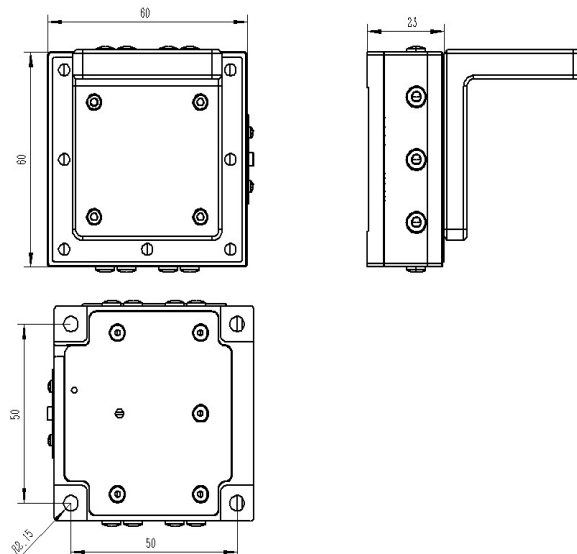
VL-PZ090-10



VL-PZ060-10



VL-PZ060-06



Service & Support

We are dedicated to delivering exceptional optoelectronic solutions to every client. From precision manufacturing and secure delivery to full-lifecycle technical support, we are here to ensure a seamless and reliable experience at every step.

1. Warranty Policy

Quality First, Worry-Free Operation

Warranty Period: We offer a **two-year** warranty service for all of our core optoelectronic products, effective from the date of shipment.

Coverage: We provide free repair or replacement services for malfunctions caused by material defects or workmanship errors under normal operating conditions.

Rapid Response: Upon receiving a warranty claim, we guarantee to initiate the assessment process within **24 hours** to minimize your equipment downtime.

2. Technical Support

Expert Team, Full-Process Guidance

Technical Consultation: Our team of senior optical engineers provides **24/7 online support** to assist with installation, commissioning, optical path alignment, and parameter optimization.

Scheduled Maintenance: We offer full-lifecycle maintenance recommendations, including firmware upgrades, optical component cleaning guidelines, and precision calibration services.

Training Services: We provide customized remote or on-site operational and safety training to ensure your team can operate the equipment efficiently and safely.

3. Logistics & Delivery

Precision Packaging, Global Reach

Professional Packaging: Given the fragile nature of optical instruments, we utilize industrial-grade shockproof, anti-static, and moisture-proof vacuum packaging to ensure zero damage during transit.

Logistics Partners: We partner with top-tier global logistics providers (**DHL / FedEx / UPS / SF Express**) to offer reliable shipping with real-time tracking.

Shipping Insurance: All shipments are fully insured to eliminate logistics risks.

4. Compliance & Certification


Strict Standards, Total Compliance

Quality Certification: Our manufacturing process is **ISO 9001 certified**, and our products comply with international standards such as **CE** and **RoHS**.

Export Compliance: "Committed to environmental responsibility, all our products comply with **RoHS 2.0** and **REACH** standards, ensuring safety and global compliance."

Explore Series

Model	Weight (kg)	Max Load (kg)	Max Speed (mm/s)	Travel Range (mm)
VL-PT100-25HD	2.55	5	1	25
VL-PT060-06	0.5	0.5	100	1 - 6
VL-PZ100-20	1.3	1 - 4	100	10 - 40

 Get in touch with our team to explore configurations, request a quote, or learn more about customized solutions tailored to your needs.

Let us help you move science forward—faster and smarter.

[Get a Quote](#)



Get Expert Advice
+658099 5547 (WhatsApp)



Visit Us
www.venuslabtech.com