

# Raman Systems

## VenusLab R532 Raman Probe

Standardized Raman accessories for 532nm lasers

- Precise wavelength adaptation
- Flexible structural design
- Strong environmental adaptability with a wide temperature and humidity range
- High operational reliability and convenient maintenance



One Platform Many Possibilities

Contact Us [sales@venuslabtech.com](mailto:sales@venuslabtech.com)

Get a Quote



Get Expert Advice  
+658099 5547 ( WhatsApp )



Visit Us  
[www.venuslabtech.com](http://www.venuslabtech.com)

## Overview

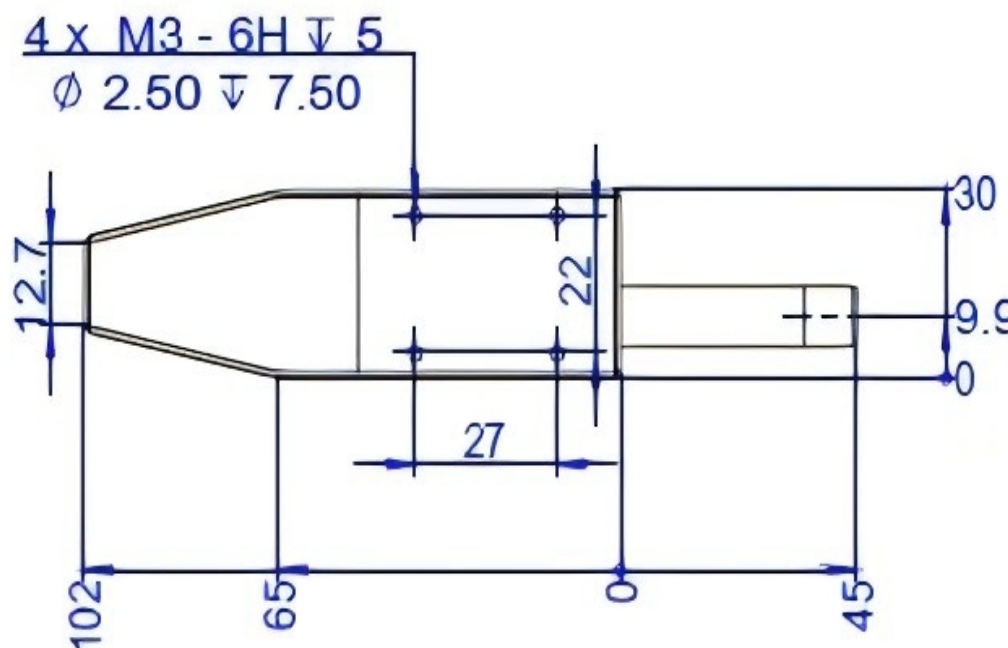
### Product Introduction of VenusLab R532 Raman Probe :

The VenusLab R532 Raman Probe is a standardized accessory specifically designed for 532nm lasers. Its core applicable spectral range is 200cm<sup>-1</sup> ~ 4000cm<sup>-1</sup>, which can effectively filter out stray light and has the ability to collect signals quickly and accurately. This probe is compatible with samples in various forms such as solids and liquids, and is widely used in scientific research experiments and industrial non-destructive testing scenarios. In addition, it supports flexible customization and has excellent cost performance.

### Features of VenusLab R532 Raman Probe:

- Raman spectrum: 150 cm<sup>-1</sup> - 4000 cm<sup>-1</sup>
- Effectively filter Rayleigh signal, cut-off depth >OD8
- Product assembly process to ensure consistency
- Consistency of initial beam: Start < 150 cm<sup>-1</sup>

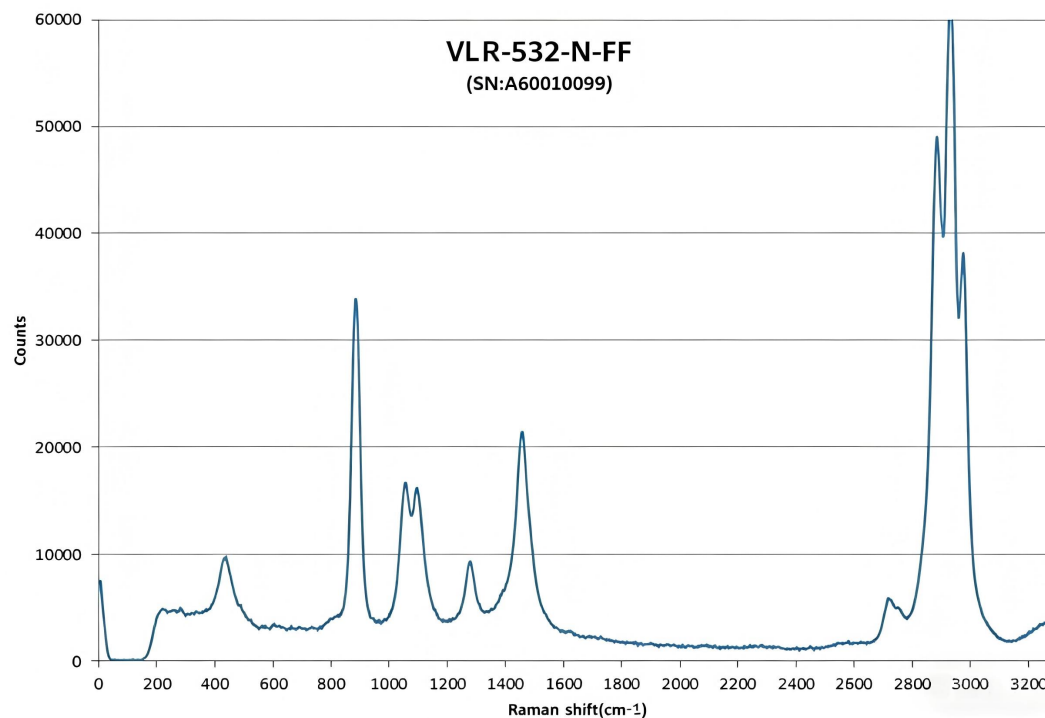
### Dimension Drawing:



## Specifications

Specification Parameter	Same Parameter Value
Laser Wavelength	532nm
Emission Spectral Range	150 cm <sup>-1</sup> - 4000 cm <sup>-1</sup>
Probe Working Distance	7.5mm (customizable)
Probe Output Coupling Efficiency	80%
Operating Temperature	Probe body: -20°C - 80°C
Operating Humidity	5% - 80%

## Spectrum chart



- Integration time: 300ms
- laser power: 50mW
- The test sample was analytical pure ethanol placed in a 12.5mm× 12.5×45mm colorimetric dish

## Service & Support

We are dedicated to delivering exceptional optoelectronic solutions to every client. From precision manufacturing and secure delivery to full-lifecycle technical support, we are here to ensure a seamless and reliable experience at every step.

### 1. Warranty Policy

#### Quality First, Worry-Free Operation

**Warranty Period:** We offer a **two-year** warranty service for all of our core optoelectronic products, effective from the date of shipment.

**Coverage:** We provide free repair or replacement services for malfunctions caused by material defects or workmanship errors under normal operating conditions.

**Rapid Response:** Upon receiving a warranty claim, we guarantee to initiate the assessment process within **24 hours** to minimize your equipment downtime.

## 2. Technical Support

### Expert Team, Full-Process Guidance

**Technical Consultation:** Our team of senior optical engineers provides **24/7 online support** to assist with installation, commissioning, optical path alignment, and parameter optimization.

**Scheduled Maintenance:** We offer full-lifecycle maintenance recommendations, including firmware upgrades, optical component cleaning guidelines, and precision calibration services.

**Training Services:** We provide customized remote or on-site operational and safety training to ensure your team can operate the equipment efficiently and safely.

## 3. Logistics & Delivery

### Precision Packaging, Global Reach

**Professional Packaging:** Given the fragile nature of optical instruments, we utilize industrial-grade shockproof, anti-static, and moisture-proof vacuum packaging to ensure zero damage during transit.

**Logistics Partners:** We partner with top-tier global logistics providers (**DHL / FedEx / UPS / SF Express**) to offer reliable shipping with real-time tracking.

**Shipping Insurance:** All shipments are fully insured to eliminate logistics risks.

## 4. Compliance & Certification


### Strict Standards, Total Compliance

**Quality Certification:** Our manufacturing process is **ISO 9001 certified**, and our products comply with international standards such as **CE** and **RoHS**.

**Export Compliance:** "Committed to environmental responsibility, all our products comply with **RoHS 2.0** and **REACH** standards, ensuring safety and global compliance."

## Explore Series

Model	Probe Output Coupling Efficiency	Probe Working Distance	Laser Wavelength	Front Probe Rod Length	Combiner Armor	Emission Spectrum Range	Fiber Length (Combiner Section)	Fiber Length (Splitter Section)
VL R-532-1.5-FS	-	-	-	45 mm	8.5mm plastic-coated double-lock metal tube, withstanding 50N tension	-	115cm±5cm	30cm±5cm
VL R-532 Et probe	-	-	-	45 mm	8.5mm plastic-coated double-lock metal tube, withstanding 50N tension	-	115cm±5cm	30cm±5cm
VL R-532L-1.5-FS	-	-	-	45 mm	8.5mm plastic-coated double-lock metal tube, withstanding 50N tension	-	115cm±5cm	30cm±5cm
VL R-532-N-F	80%	7.5mm (customizable)	532nm	-	-	150cm-1 - 4000cm-1	-	-

 Get in touch with our team to explore configurations, request a quote, or learn more about customized solutions tailored to your needs.

Let us help you move science forward—faster and smarter.

[Get a Quote](#)



Get Expert Advice  
+658099 5547 ( WhatsApp )



Visit Us  
[www.venuslabtech.com](http://www.venuslabtech.com)