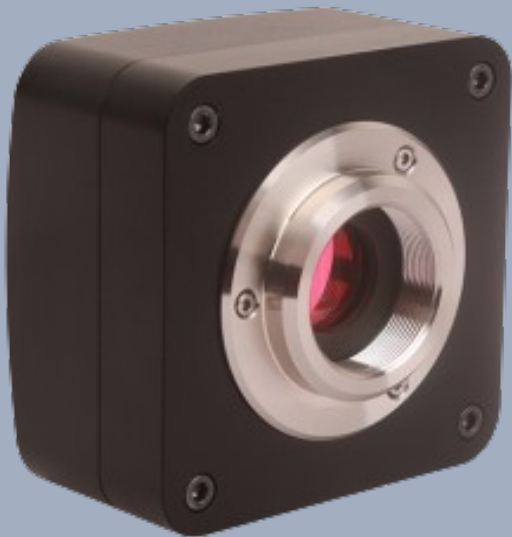


CCD Cameras

Venuslab ExView EX Camera

Cost-effective low-light imaging and basic detection equipment

- Excellent low-light capturing capability
- Strong general usability
- Combining adaptability and durability



One Platform Many Possibilities

Contact Us sales@venuslabtech.com

Get a Quote



Get Expert Advice
+658099 5547 (WhatsApp)



Visit Us
www.venuslabtech.com

Overview

Introduction to the Venuslab ExView EX Camera :

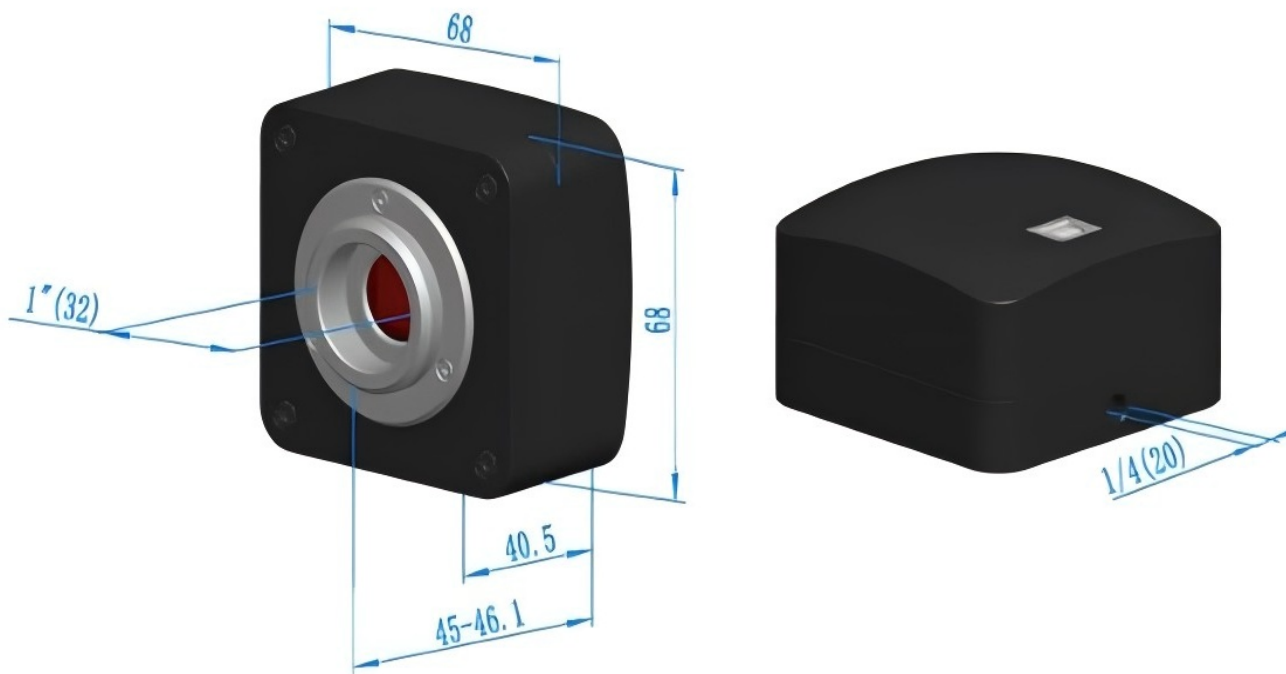
The Venuslab ExView EX Camera is a cost-effective low-light imaging device equipped with a 0.3M-1.4M pixel Sony ExView HAD CCD sensor. Leveraging near-infrared light conversion technology and a maximum 4-minute long exposure function, it can capture clear images in dimly lit environments. Coupled with the Ultra-Fine color engine and IR-CUT filter, it achieves accurate color reproduction. The camera adopts a standard C interface to adapt to mains stream optical equipment, features plug-and-play functionality via a USB2.0 interface with bus power supply, and its integrated zinc alloy casing ensures durability. It is widely applicable to scenarios such as biological fluorescence observation, electronic component inspection, and microscopic teaching, balancing low-light imaging performance and cost input.

Features:

- Standard C interface, equipped with Sony ExView sensor;
- USB2.0 interface ensures high-speed data transmission, and Ultra-Fine color engine restores accurate colors;
- Provides multi-system SDKs for Windows/Linux/Mac and control APIs such as C/C++, C#.

Dimension:

Schematic diagram of the external dimensions of the Venuslab ExView EX Camera. The camera housing is made of hard zinc-aluminum alloy, precision-machined by CNC and then oxidized. A high-quality IR-CUT is installed at the front end of the camera sensor, which mainly functions to filter out infrared light waves in imaging and protect the camera sensor at the same time. Compared with cameras of other brands, Venuslab's cameras have no moving parts to ensure that the camera is sturdy, reliable and durable. At the same time, there is no image blurring caused by the shaking of moving parts.



Specifications

Venuslab ExView EX Camera Common Parameter Specification Table

Other Specification	
Spectral Range	380-650nm (with IR-cut Filter)
White Balance	ROI White Balance/Manual Temp Tint Adjustment/NA for Monochromatic Sensor
Color Technique	Ultra - Fine Color Engine / NA for Monochromatic Sensor
Capture/Control SDK	Windows/Linux/macOS/Android Multiple Platform SDK (Native C/C++, C#/VB.NET, Python, Java, DirectShow, Twain, etc)
ADC	8 Bit / 12 Bit
Recording System	Still Picture and Movie
Cooling System*	Natural
Operating Environment	
Operating Temperature (in Centidegree)	-10 - 50
Storage Temperature (in Centidegree)	-20 - 60
Operating Humidity	30 - 80% RH
Storage Humidity	10 - 60% RH
Power Supply	DC 5V over PC USB Port
Software Environment	
Operating System	Microsoft® Windows® XP / Vista / 7 / 8 /10 /11 (32 & 64 bit) OSx(Mac OS X)Linux
PC Requirements	CPU: Equal to Intel Core2 2.8GHz or Higher
	Memory: 2GB or More
	USB Port: USB2.0 High - speed Port
	Display: 17" or Larger CD - ROM

Packing List

Packing Information for Venuslab ExView EX Camera



Standard Camera Packing List			
A	Carton L:52cm W:32cm H:33cm (20pcs, 12 - 17Kg/carton), not shown in the photo		
B	Gift box L:15cm W:15cm H:10cm (0.67 - 0.80Kg/box)		
C	One EXCCD series camera		
D	High - speed USB2.0 A male to B male gold - plated connectors cable / 2.0m		
E	CD (Driver & utilities software, Ø12cm)		
Optional Accessory			
F	Adjustable lens adapter	C-mount to Dia.23.2mm eyepiece tube(Please choose 1 of them for your microscope)	108001/AMA037108002/ AMA050108003/AMA075
		C-Mount to Dia.31.75mm eyepiece tube(Please choose 1 of them for your telescope)	108008/ATA037108009/ ATA050108010/ATA075
G	Fixed lens adapter	C-mount to Dia.23.2mm eyepiece tube(Please choose 1 of them for your microscope)	108005/FMA037108006/ FMA050108007/FMA075
		C-mount to Dia.31.75mm eyepiece tube(Please choose 1 of them for your telescope)	108011/FTA037108012/ FTA050108013/FTA075
Note: For F and G optional items, please specify your camera type(C-mount, microscope camera or telescope camera), ToupTek engineer will help you to determine the right microscope or telescope camera adapter for your application;			
H	108015(Dia.23.2mm to 30.0mm ring)/Adapter rings for 30mm eyepiece tube		
I	108016(Dia.23.2mm to 30.5mm ring)/ Adapter rings for 30.5mm eyepiece tube		
J	108017(Dia.23.2mm to 31.75mm Ring)/ Adapter rings for 31.75mm eyepiece tube		
K	Calibration kit	106011/TS-M1(X=0.01mm/100Div.);106012/TS-M2(X,Y=0.01mm/ 100Div.);106013/TS-M7(X=0.01mm/100Div., 0.10mm/100Div.)	

Service & Support

We are dedicated to delivering exceptional optoelectronic solutions to every client. From precision manufacturing and secure delivery to full-lifecycle technical support, we are here to ensure a seamless and reliable experience at every step.

1. Warranty Policy

Quality First, Worry-Free Operation

Warranty Period: We offer a **two-year** warranty service for all of our core optoelectronic products, effective from the date of shipment.

Coverage: We provide free repair or replacement services for malfunctions caused by material defects or workmanship errors under normal operating conditions.

Rapid Response: Upon receiving a warranty claim, we guarantee to initiate the assessment process within **24 hours** to minimize your equipment downtime.

2. Technical Support

Expert Team, Full-Process Guidance

Technical Consultation: Our team of senior optical engineers provides **24/7 online support** to assist with installation, commissioning, optical path alignment, and parameter optimization.

Scheduled Maintenance: We offer full-lifecycle maintenance recommendations, including firmware upgrades, optical component cleaning guidelines, and precision calibration services.

Training Services: We provide customized remote or on-site operational and safety training to ensure your team can operate the equipment efficiently and safely.

3. Logistics & Delivery

Precision Packaging, Global Reach

Professional Packaging: Given the fragile nature of optical instruments, we utilize industrial-grade shockproof, anti-static, and moisture-proof vacuum packaging to ensure zero damage during transit.

Logistics Partners: We partner with top-tier global logistics providers (**DHL / FedEx / UPS / SF Express**) to offer reliable shipping with real-time tracking.

Shipping Insurance: All shipments are fully insured to eliminate logistics risks.

4. Compliance & Certification


Strict Standards, Total Compliance

Quality Certification: Our manufacturing process is **ISO 9001 certified**, and our products comply with international standards such as **CE** and **RoHS**.

Export Compliance: "Committed to environmental responsibility, all our products comply with **RoHS 2.0** and **REACH** standards, ensuring safety and global compliance."

Explore Series

Model	Binning	Pixel(μm)	G Sensitivity / Dark Signal	Exposure	Sensor & Size(mm)	FPS/ Resolution
TP801400A	1x1	6.45x6.45	1240mv with 1/30s 10mv with 1/30s	0.12ms - 240s	1.4M/ICX285AQ(C) 2/3" (8.77x6.6)	15@ 1360x1024
TM801400A	1x1	6.45x6.45	1300mv with 1/30s 10mv with 1/30s	0.12ms - 240s	1.4M/ICX285ALM(M) 2/3" (8.77x6.6)	15@ 1360x1024
TM800440A	1x1	8.6x8.6	118mv with 1/30s 2mv with 1/30s	0.20ms - 1h	0.44M/ICX629ALM(M) 1/2.3" (6.43x4.82)	46@748x578
TM800300A	1x1	5.6x5.6	120mv with 1/30s 2mv with 1/30s	0.06ms - 40s	0.3M/ICX618ALM(M) 1/3" (4.8x3.6)	72@640x480

 Get in touch with our team to explore configurations, request a quote, or learn more about customized solutions tailored to your needs.

Let us help you move science forward—faster and smarter.

[Get a Quote](#)



Get Expert Advice
+658099 5547 (WhatsApp)



Visit Us
www.venuslabtech.com