

VL-220UPTA-(50-300)H VL-220UPTA-H100



One Platform Many Possibilities

Contact Us sales@venuslabtech.com

Get a Quote



Get Expert Advice
+65 8099 5547



Visit Us
www.venuslabtech.com



Product diagram of VL-220UPTA-H100

VL-220UPTA-H100 VL-220UPTA-(50-300)H is an electric linear stage designed for high-precision positioning applications requiring a 100mm travel range. It features a working surface of 179x179mm and can support a maximum load of 3.4kg. This device uses high-precision ball screw transmission and linear block guides to provide a repeat positioning accuracy of 1 μ m and a maximum operating speed of 60mm/s. It comes with a built-in dust cover, and users can opt for additional accessories such as an optical scale, servo motor, or power-off brake functions.

Features

- 100mm Travel: Suitable for short to medium-range applications.
- Medium Load Capacity: Maximum load of 3.4kg.
- High Precision Positioning: 1 μ m repeat positioning accuracy.
- Quick Operation: Maximum speed up to 60mm/s.
- Multifunctionality Options: Capable of adding accessories like optical scales and servo motors.

Parameter

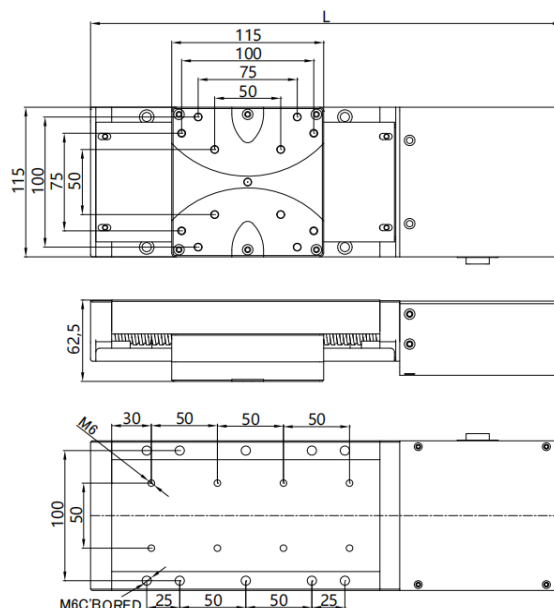
Travel Range : 100mm


Overall Length : 407mm

Load Capacity : 15kg

Weight: 3.4kg

Dimensions



 Get in touch with our team to explore configurations, request a quote, or learn more about customized solutions tailored to your needs.

Let us help you move science forward — faster and smarter.

[Get a Quote](#)



Get Expert Advice
+65 8099 5547



Visit Us
www.venuslabtech.com