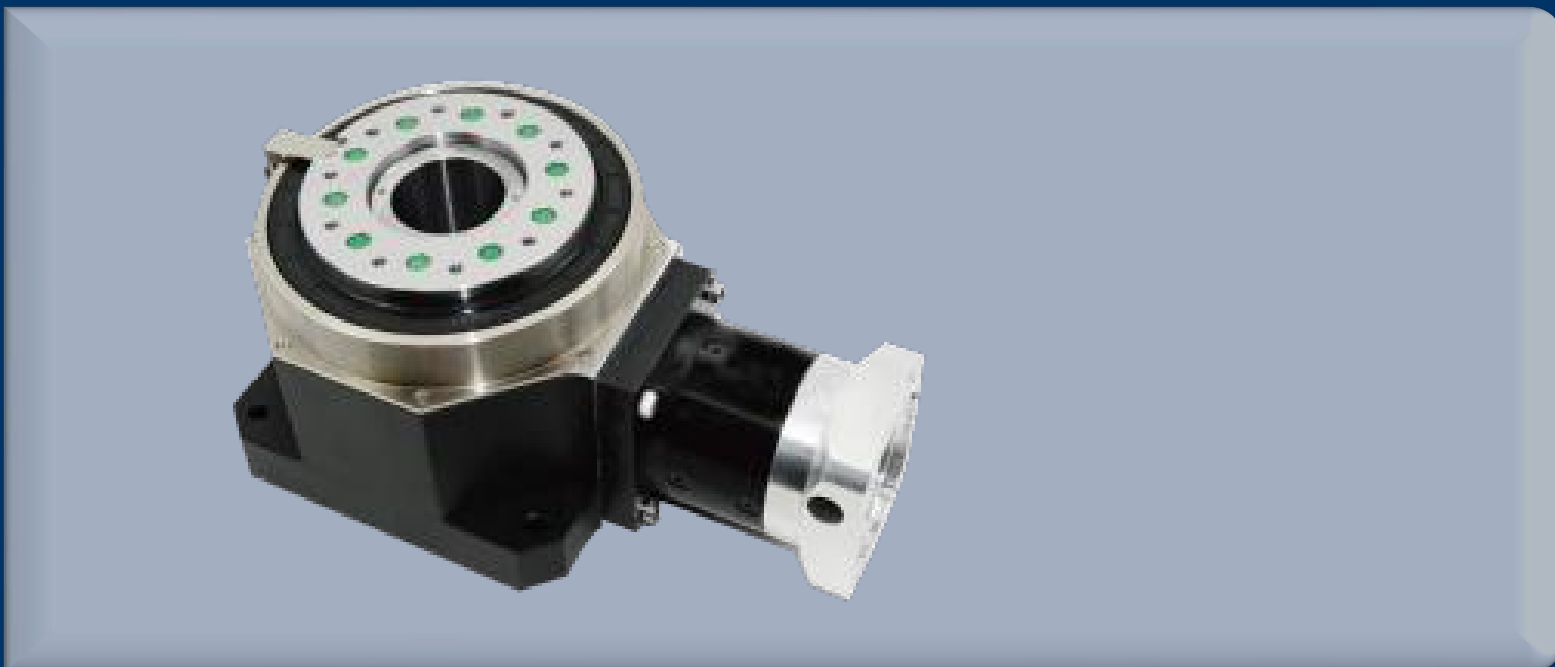


Industrial Turntable

VL-R1-60 Series(40-160)

Industrial single-axis high-rigidity rotary stage

- Crossed roller bearing + preload design, rigidity is 10 times higher than traditional ones, and backlash is nearly zero.
- Reduction ratio 1-1536, load capacity up to 26700N, protection level IP65, resistant to harsh working conditions.



One Platform Many Possibilities

Contact Us sales@venuslabtech.com

Get a Quote



Get Expert Advice
+658099 5547 (WhatsApp)



Visit Us
www.venuslabtech.com

Overview

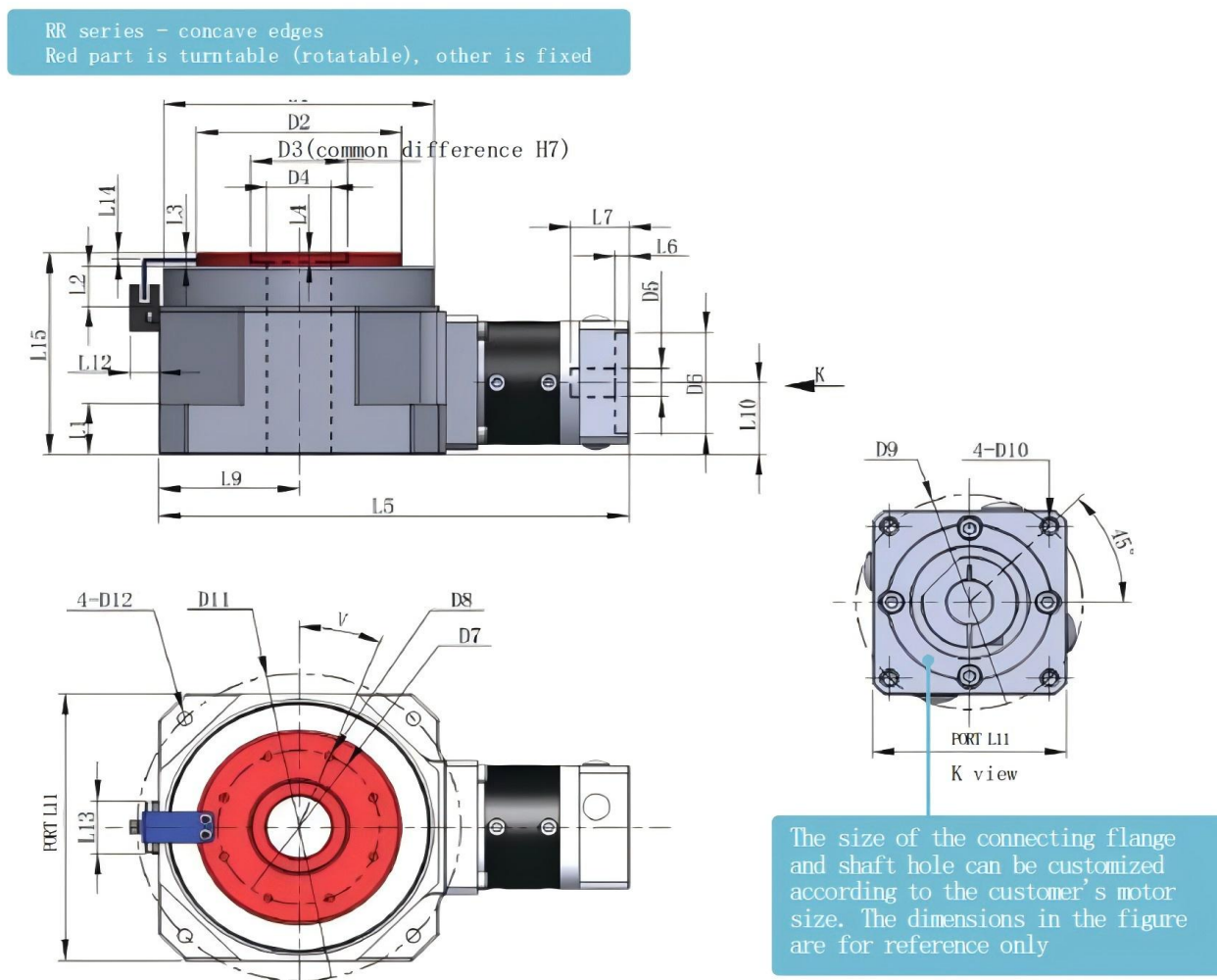
Industrial Precision Rotation Solutions

VenusLab VL-R1-60 Series (40-160) is an industrial single-axis electric rotary stage featuring **high rigidity and wide adaptability**. Crossed roller bearing with preload delivers 10x higher rigidity and near-zero backlash. 1-1536 adjustable gear ratio covers full specs, with max load 26700N and IP65 protection. Ideal for precision testing and harsh environments, it's a cost-effective integration solution.

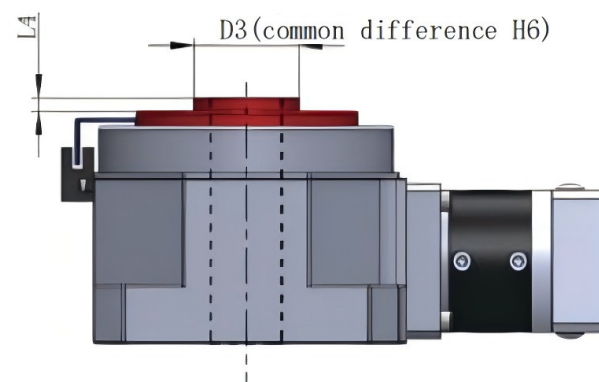
Features of VL-R1-60 Series (40-160)

- 90° staggered preloaded crossed roller bearing, with rigidity 10 times higher than traditional ones
- Secondary grinding of the turntable to control tolerance, planetary deceleration to reduce backlash to nearly zero clearance
- 1-1536 reduction ratio + standard photoelectric / optional limit switch
- IP65 grade skeleton oil seal, resistant to dust / splashing water

Dimension drawing of VL-R1-60 Series (40-160)



RR series - convex table
(unnoted dimensions are the same as "concave edges")



Service & Support

We are dedicated to delivering exceptional optoelectronic solutions to every client. From precision manufacturing and secure delivery to full-lifecycle technical support, we are here to ensure a seamless and reliable experience at every step.

1. Warranty Policy

Quality First, Worry-Free Operation

Warranty Period: We offer a **two-year** warranty service for all of our core optoelectronic products, effective from the date of shipment.

Coverage: We provide free repair or replacement services for malfunctions caused by material defects or workmanship errors under normal operating conditions.

Rapid Response: Upon receiving a warranty claim, we guarantee to initiate the assessment process within **24 hours** to minimize your equipment downtime.

2. Technical Support

Expert Team, Full-Process Guidance

Technical Consultation: Our team of senior optical engineers provides **24/7 online support** to assist with installation, commissioning, optical path alignment, and parameter optimization.

Scheduled Maintenance: We offer full-lifecycle maintenance recommendations, including firmware upgrades, optical component cleaning guidelines, and precision calibration services.

Training Services: We provide customized remote or on-site operational and safety training to ensure your team can operate the equipment efficiently and safely.

3. Logistics & Delivery

Precision Packaging, Global Reach

Professional Packaging: Given the fragile nature of optical instruments, we utilize industrial-grade shockproof, anti-static, and moisture-proof vacuum packaging to ensure zero damage during transit.

Logistics Partners: We partner with top-tier global logistics providers (**DHL / FedEx / UPS / SF Express**) to offer reliable shipping with real-time tracking.

Shipping Insurance: All shipments are fully insured to eliminate logistics risks.

4. Compliance & Certification


Strict Standards, Total Compliance

Quality Certification: Our manufacturing process is **ISO 9001 certified**, and our products comply with international standards such as **CE** and **RoHS**.

Export Compliance: "Committed to environmental responsibility, all our products comply with **RoHS 2.0** and **REACH** standards, ensuring safety and global compliance."

Explore Series

Model	Weight (kg)	Torsional Rigidity (N• m/arcmin)	Max Radial Force (N)	Max Overturning Moment (N• M)	Average Service Life (h)	Reference Load Capacity (kg)
VL-R1-60-40	3.3-3.5	0.7	5800	435	3.3	15
VL-R1-60-60	6.5-6.8	1.8	6700	636	6.5	40
VL-R1-60-80	15.5-16.4	4.4	11000	1430	20000	80
VL-R1-60-120	34.7-38.6	9.2	16300	2771	34.7	200
VL-R1-60-160	76.6-86.6	26.7	26700	5340	76.6	800

 Get in touch with our team to explore configurations, request a quote, or learn more about customized solutions tailored to your needs.

Let us help you move science forward—faster and smarter.

[Get a Quote](#)



Get Expert Advice
+658099 5547 (WhatsApp)



Visit Us
www.venuslabtech.com