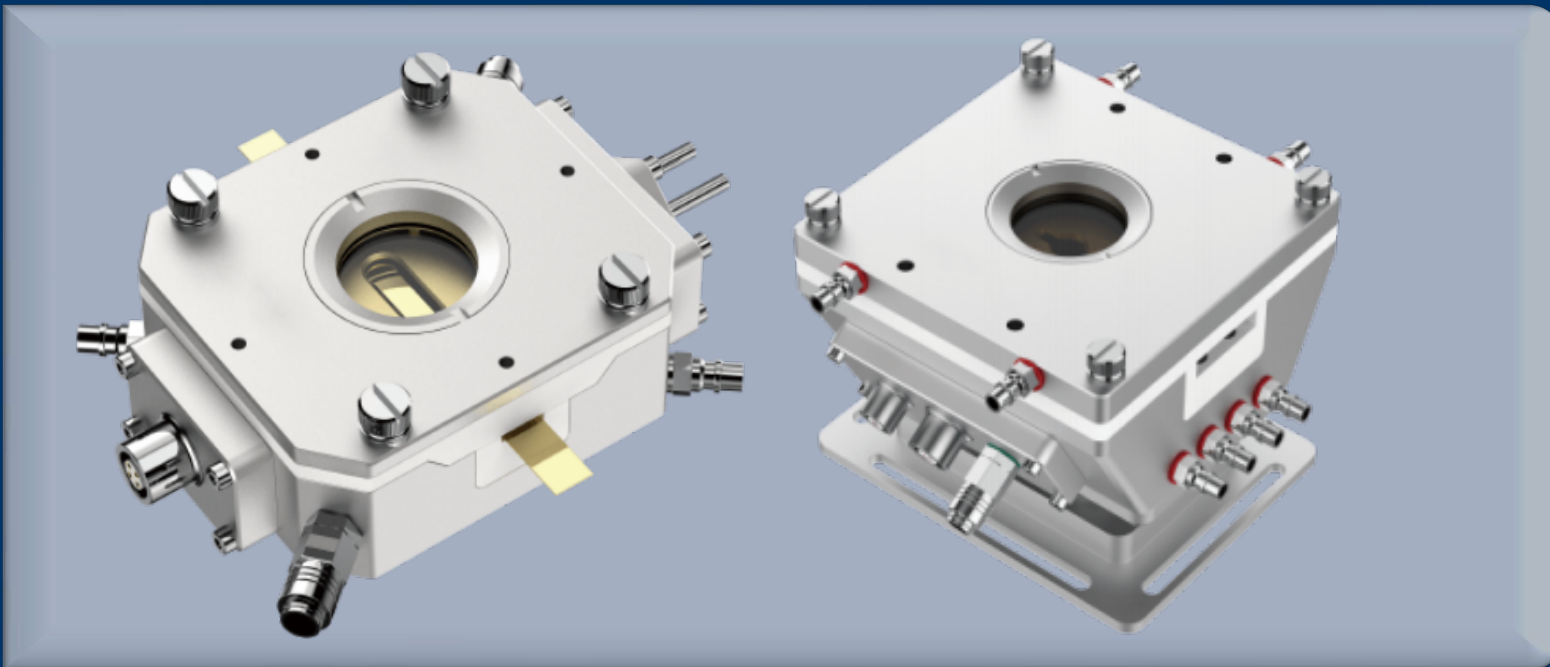


Mechanical

Tensile Thermo Stage

Key equipment for material micromechanical property research

- Precise temperature control
- Diverse mechanical tests
- Convenient in-situ observation
- Strong compatibility



One Platform Many Possibilities

Contact Us sales@venuslabtech.com

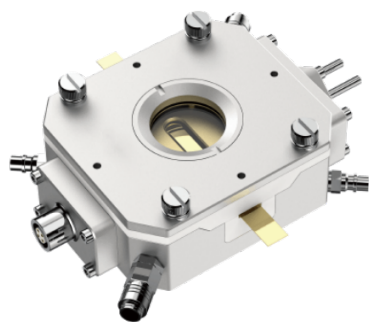
Get a Quote



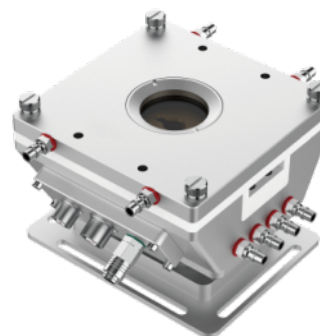
Get Expert Advice
+658099 5547 (WhatsApp)



Visit Us
www.venuslabtech.com



VLM-190-600



VLM-190-600-HT

Overview

Introduction to TensileThermo Stage:

By comprehensively applying advanced refrigeration and heating technologies, precise control of the temperature in the test environment is achieved. In terms of refrigeration, some models adopt liquid nitrogen refrigeration, which can quickly lower the temperature to an extremely low level, reaching -190°C , making it possible to study the brittle transition and cold brittleness of materials at low temperatures. For the heating function, high-efficiency resistance heating elements are mostly used, which can raise the temperature to 1000°C or even higher (depending on the specific model). Real-time monitoring is conducted through precision temperature sensors (such as thermocouples, PT100, etc.), combined with PID temperature control algorithms, to ensure that the temperature stability is maintained at an extremely high level. For example, it can reach $\pm 0.1^{\circ}\text{C}$ when the temperature is $< 600^{\circ}\text{C}$, and $\pm 1^{\circ}\text{C}$ when the temperature is $> 600^{\circ}\text{C}$.

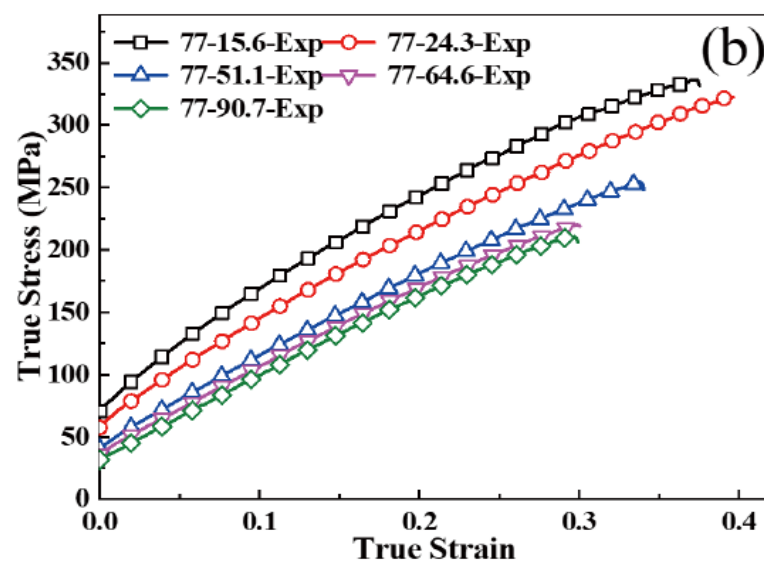
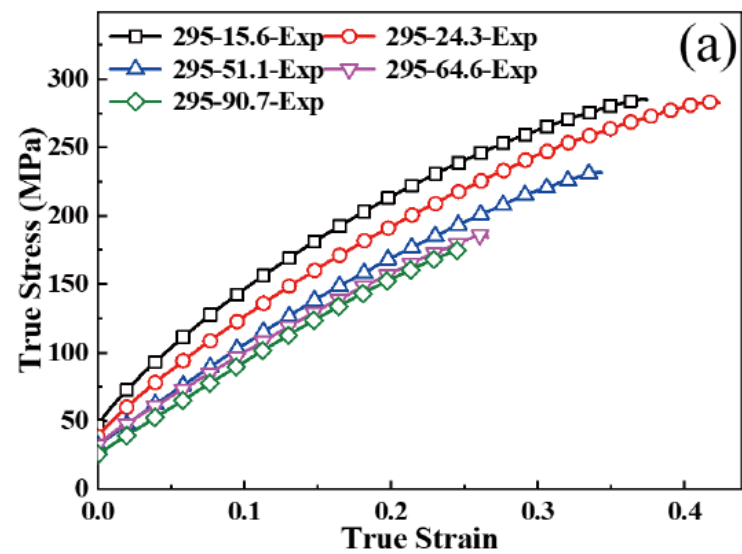
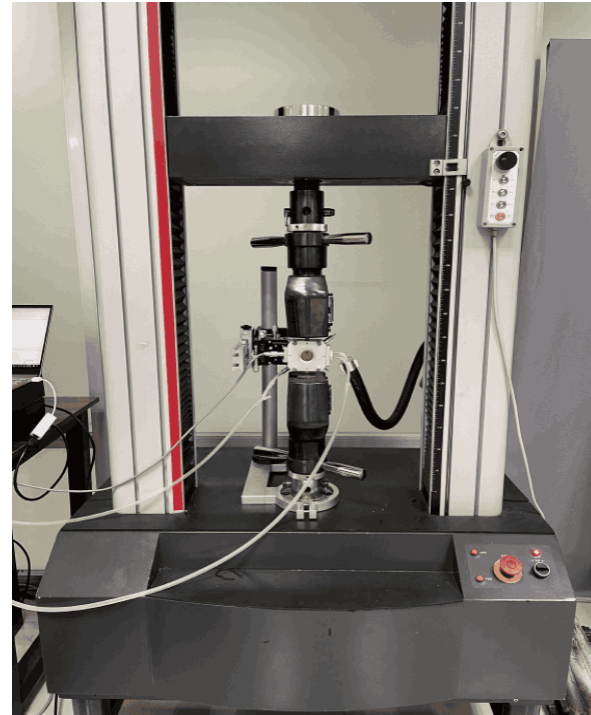
Specifications

Same parameters

Parameter	Description
Cooling and heating method	Liquid nitrogen refrigeration, resistance heating
Temperature range	$-130 \sim -600$
Temperature stability	± 0.1
Temperature control rate	Maximum heating rate: $100 \text{ }^{\circ}\text{C}/\text{min}$, maximum cooling rate: $40 \text{ }^{\circ}\text{C}/\text{min}$
Window material	JGS2 quartz glass (transmission band range $220\text{nm} \sim 2500\text{nm}$), can be manually disassembled and replaced
Chamber	Atmosphere

Application

Customize a thermal stage for a universal testing machine, which is used in high-entropy alloy research



Service & Support

We are dedicated to delivering exceptional optoelectronic solutions to every client. From precision manufacturing and secure delivery to full-lifecycle technical support, we are here to ensure a seamless and reliable experience at every step.

1. Warranty Policy

Quality First, Worry-Free Operation

Warranty Period: We offer a **two-year** warranty service for all of our core optoelectronic products, effective from the date of shipment.

Coverage: We provide free repair or replacement services for malfunctions caused by material defects or workmanship errors under normal operating conditions.

Rapid Response: Upon receiving a warranty claim, we guarantee to initiate the assessment process within **24 hours** to minimize your equipment downtime.

2. Technical Support

Expert Team, Full-Process Guidance

Technical Consultation: Our team of senior optical engineers provides **24/7 online support** to assist with installation, commissioning, optical path alignment, and parameter optimization.

Scheduled Maintenance: We offer full-lifecycle maintenance recommendations, including firmware upgrades, optical component cleaning guidelines, and precision calibration services.

Training Services: We provide customized remote or on-site operational and safety training to ensure your team can operate the equipment efficiently and safely.

3. Logistics & Delivery

Precision Packaging, Global Reach

Professional Packaging: Given the fragile nature of optical instruments, we utilize industrial-grade shockproof, anti-static, and moisture-proof vacuum packaging to ensure zero damage during transit.

Logistics Partners: We partner with top-tier global logistics providers (**DHL / FedEx / UPS / SF Express**) to offer reliable shipping with real-time tracking.

Shipping Insurance: All shipments are fully insured to eliminate logistics risks.

4. Compliance & Certification


Strict Standards, Total Compliance

Quality Certification: Our manufacturing process is **ISO 9001 certified**, and our products comply with international standards such as **CE and RoHS**.

Export Compliance: "Committed to environmental responsibility, all our products comply with **RoHS 2.0 and REACH standards**, ensuring safety and global compliance."

Explore Series

Model	Net Weight	Overall Dimensions	Sample Stage	Temperature range
VLM-190-600	1kg	96mm×70mm×30mm	Brass; 30mm×25mm	-190°C~600°C
VLM-190-600-HT	2kg	160mm×143mm×83mm	Copper; 30mm×50mm	-190°C~600°C

 Get in touch with our team to explore configurations, request a quote, or learn more about customized solutions tailored to your needs.

Let us help you move science forward—faster and smarter.

[Get a Quote](#)



Get Expert Advice
+658099 5547 (WhatsApp)



Visit Us
www.venuslabtech.com