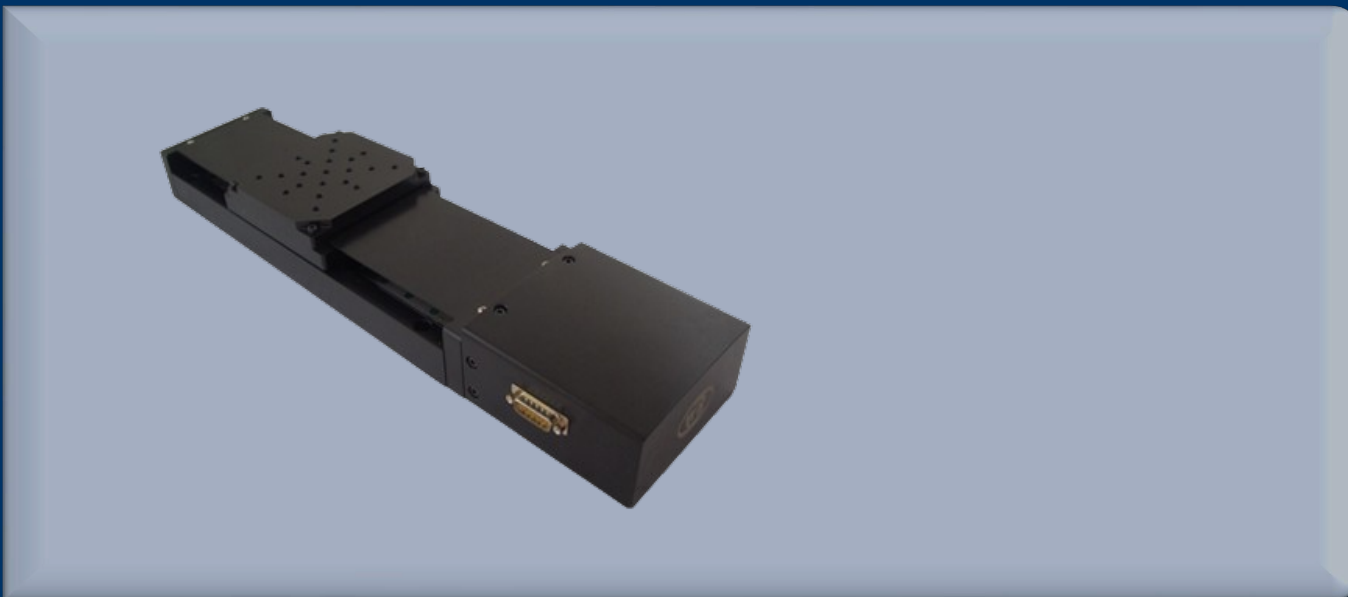


VL-220UPTA-(50-300)H VL-220UPTA-H50



One Platform Many Possibilities

Contact Us sales@venuslabtech.com

Get a Quote



Get Expert Advice
+65 8099 5547



Visit Us
www.venuslabtech.com



Product diagram of VL-220UPTA-H50

VL-220UPTA-H50 VL-220UPTA-(50-300)H is an electric linear stage designed for high-precision positioning and short travel applications. It offers a travel range of 50mm, with a working surface size of 179x179mm, and a maximum load capacity of 2.8kg. This device uses high-precision ball screw transmission and linear block guides to ensure a repeat positioning accuracy of 1 μ m and a maximum operating speed of 60mm/s. It comes with a built-in dust cover and options for additional accessories such as an optical scale and servo motor.

Features

- Short Travel: 50mm travel range, suitable for short-distance applications.
- Load Capacity: Maximum load of 2.8kg.
- High Precision: 1 μ m repeat positioning accuracy.
- Quick Response: Maximum speed of 60mm/s.
- Expandability: Optional accessories including optical scales and servo motors.

Parameter

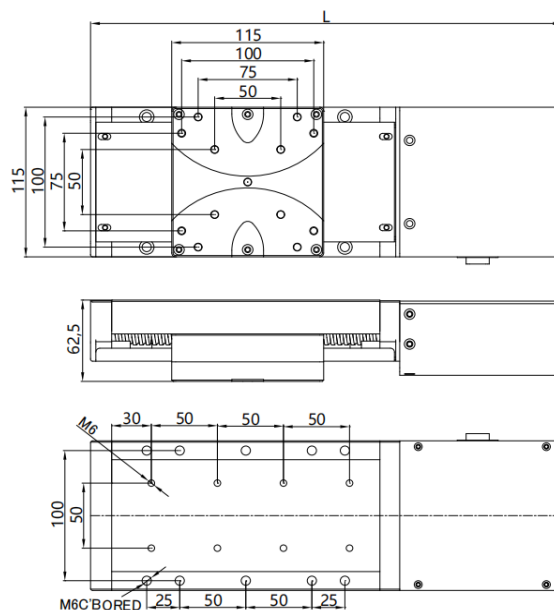
Travel Range : 50mm


Overall Length : 357mm

Load Capacity : 15kg

Weight: 2.8kg

Dimensions



 Get in touch with our team to explore configurations, request a quote, or learn more about customized solutions tailored to your needs.

Let us help you move science forward — faster and smarter.

[Get a Quote](#)



Get Expert Advice
+65 8099 5547



Visit Us
www.venuslabtech.com