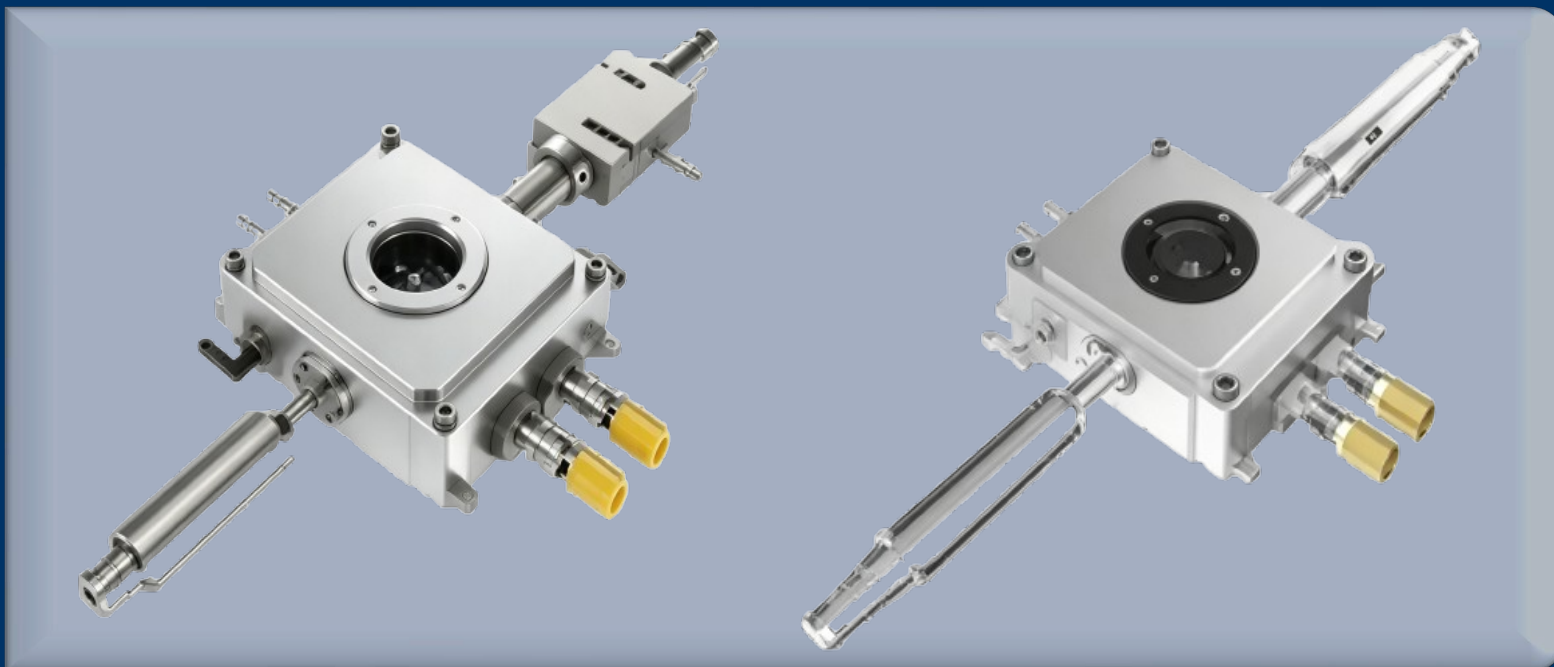


Mechanical

Temperature Controlled Stages for mechanical testing

Study on Material Properties under Temperature-Mechanical
Coupling Environment

- Wide temperature range + high-precision temperature control
- Strong adaptability
- Extensibility of multi-field coupling
- Accurate data synchronization



One Platform Many Possibilities

Contact Us sales@venuslabtech.com

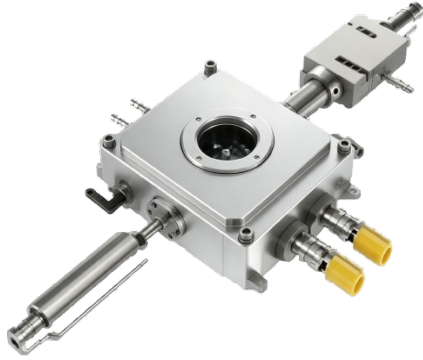
Get a Quote



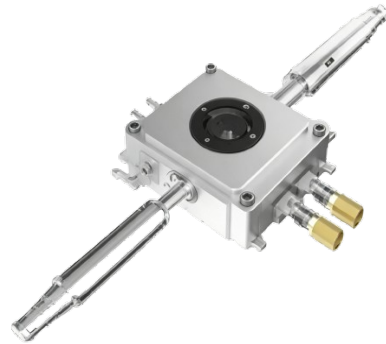
Get Expert Advice
+658099 5547 (WhatsApp)



Visit Us
www.venuslabtech.com



LN600S-T



LN600S-C

Overview

Introduction:

The thermal stage for mechanical testing is widely compatible with inorganic materials such as metals and ceramics, as well as polymer materials like plastics and rubbers. It even covers special categories including composite materials and biological materials, supporting various mechanical property testing scenarios such as tension, compression. In the low-temperature field, it can simulate the mechanical behavior of materials under extremely cold conditions, providing reliable experimental data for researching the low-temperature brittleness of materials, temperature-dependent deformation mechanisms, and more.

Features:

- Ultra-wide temperature coverage
- Precise temperature control capability
- Dynamic stress-temperature synchronous loading
- Programmed temperature control and mechanical loading
- Thermal Isolation and Protection

Specifications

Common Parameter Specification Table

Parameter Item	Parameter Details
Refrigeration model	Liquid nitrogen Refrigeration
Range of Temperature	-170 ~-500
Temperature resolution	0.1
Temperature accuracy	±0.3
Maximum heating rate	20 /min
Maximum cooling rate	-15 /min
Vacuum level	1Pa
Maximum tension or pressure	10KN
Tension resolution	0.5N
Repeat test error	2%

Service & Support

We are dedicated to delivering exceptional optoelectronic solutions to every client. From precision manufacturing and secure delivery to full-lifecycle technical support, we are here to ensure a seamless and reliable experience at every step.

1. Warranty Policy

Quality First, Worry-Free Operation

Warranty Period: We offer a **two-year** warranty service for all of our core optoelectronic products, effective from the date of shipment.

Coverage: We provide free repair or replacement services for malfunctions caused by material defects or workmanship errors under normal operating conditions.

Rapid Response: Upon receiving a warranty claim, we guarantee to initiate the assessment process within **24 hours** to minimize your equipment downtime.

2. Technical Support

Expert Team, Full-Process Guidance

Technical Consultation: Our team of senior optical engineers provides **24/7 online support** to assist with installation, commissioning, optical path alignment, and parameter optimization.

Scheduled Maintenance: We offer full-lifecycle maintenance recommendations, including firmware upgrades, optical component cleaning guidelines, and precision calibration services.

Training Services: We provide customized remote or on-site operational and safety training to ensure your team can operate the equipment efficiently and safely.

3. Logistics & Delivery

Precision Packaging, Global Reach

Professional Packaging: Given the fragile nature of optical instruments, we utilize industrial-grade shockproof, anti-static, and moisture-proof vacuum packaging to ensure zero damage during transit.

Logistics Partners: We partner with top-tier global logistics providers (**DHL / FedEx / UPS / SF Express**) to offer reliable shipping with real-time tracking.

Shipping Insurance: All shipments are fully insured to eliminate logistics risks.

4. Compliance & Certification


Strict Standards, Total Compliance

Quality Certification: Our manufacturing process is **ISO 9001 certified**, and our products comply with international standards such as **CE** and **RoHS**.

Export Compliance: "Committed to environmental responsibility, all our products comply with **RoHS 2.0** and **REACH** standards, ensuring safety and global compliance."

Explore Series

Model	Net weight	Overall dimensions	Testable sample area	Range of Temperature
LN600S-T	4kg	520mm×240mm×50mm	Dog-bone model	-170°C~500°C
LN600S-C	4kg	520mm×240mm×50mm	7mm×7mm×(7-20)mm	-170°C~500°C

 Get in touch with our team to explore configurations, request a quote, or learn more about customized solutions tailored to your needs.

Let us help you move science forward—faster and smarter.

[Get a Quote](#)



Get Expert Advice
+658099 5547 (WhatsApp)



Visit Us
www.venuslabtech.com