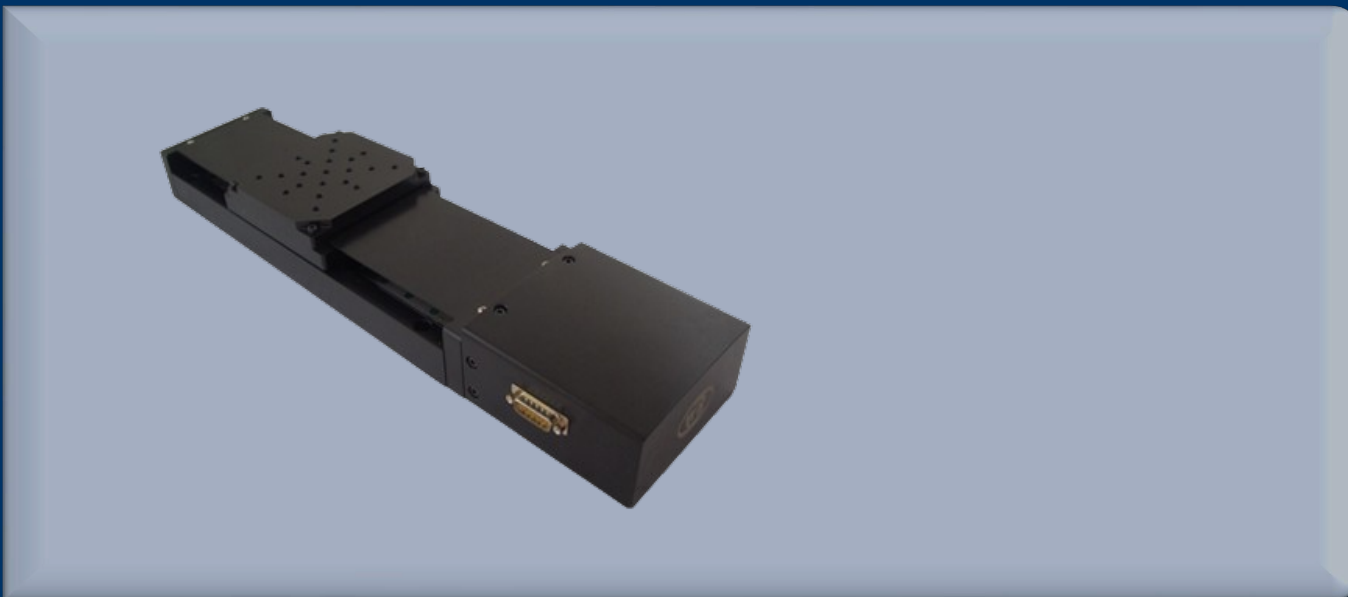


# VL-220UPTA-(50-300)H VL-220UPTA-H200



One Platform Many Possibilities

Contact Us [sales@venuslabtech.com](mailto:sales@venuslabtech.com)

Get a Quote



Get Expert Advice  
+65 8099 5547



Visit Us  
[www.venuslabtech.com](http://www.venuslabtech.com)



Product diagram of VL-220UPTA-H200

VL-220UPTA-H200 VL-220UPTA-(50-300)H is an electric linear stage offering a 200mm travel range, suitable for applications requiring a medium travel distance and high-precision positioning. It has a working surface size of 179x179mm and a maximum load capacity of 5.2kg. Equipped with high-precision ball screw transmission and linear block guides, it ensures a repeat positioning accuracy of 1 $\mu$ m and a maximum operating speed of 60mm/s. It comes with a built-in dust cover and options for additional accessories such as an optical scale and servo motor.

## Features

- 200mm Travel: Suitable for medium-range applications.
- High Load Capacity: Maximum load of 5.2kg.
- High Precision Positioning: 1 $\mu$ m repeat positioning accuracy.
- Quick Response: Maximum speed of 60mm/s.
- Expandability: Options for accessories including optical scales and servo motors.

## Parameter

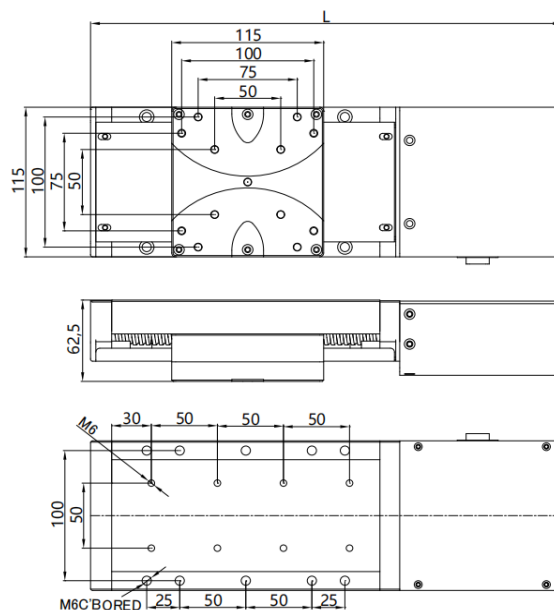
Travel Range : 200mm


Overall Length : 557mm

Load Capacity : 10kg

Weight: 5.2kg

## Dimensions



 Get in touch with our team to explore configurations, request a quote, or learn more about customized solutions tailored to your needs.

Let us help you move science forward — faster and smarter.

[Get a Quote](#)



Get Expert Advice  
+65 8099 5547



Visit Us  
[www.venuslabtech.com](http://www.venuslabtech.com)