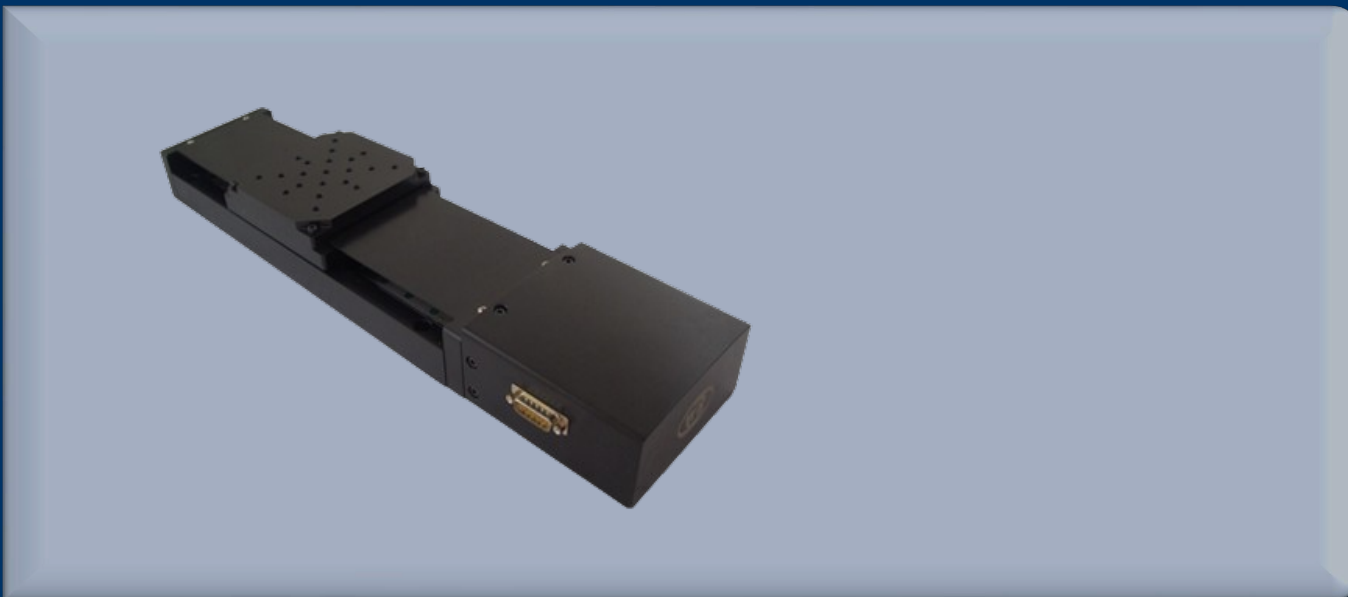


# VL-220UPTA-(50-300)H VL-220UPTA-H300



One Platform Many Possibilities

Contact Us [sales@venuslabtech.com](mailto:sales@venuslabtech.com)

Get a Quote



Get Expert Advice  
+65 8099 5547



Visit Us  
[www.venuslabtech.com](http://www.venuslabtech.com)

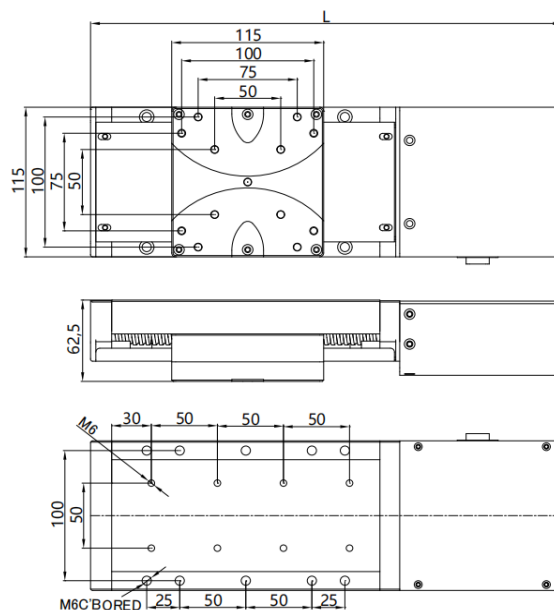


## Features

- 300mm Travel: Suitable for long-distance applications.
- High Load Capacity: Maximum load of 6.3kg
- High Precision Positioning: 1µm repeat positioning accuracy.
- Quick Response: Maximum speed of 60mm/s.
- Expandability: Options for accessories including optical scales and servo motors.

## Dimensions

Weight: 6.3kg



Let us help you move science forward — faster and smarter.

Visit Us  
[www.venuslabtech.com](http://www.venuslabtech.com)